

# INTRODUCTION



## **NUMBER OF VESSELS:**

16596 ships made full transits through the Suez Canal two directions , against 17224 ships in 2012, registering a decreased of 628 ships , equal to 3.6 % .

The daily average of transits was 45.5 ships this year against 47.1 ships in 2012.

## **NET TONNAGE:**

Transiting net tonnage registered a decrease of 13.0 million tons, from 928.5 million tons in 2012 to 915.5 million tons this year.

This decrease resulted from the decreasing tonnage of LNG by 18.3 million tons (20.7 %) and Combined Carr. by 1.0 million tons (100 % ),General Cargo Ships by 0.1 million tons (0.7 % ) and Car Carriers by 1.3 million tons(2.1 %) and Passenger Ships by 0.3 million tons (7.5 % ) .

While the other types registered an increase in net ton; Tankers by 4.2 million tons ( 3.0 % ) and Bulk Carriers by 2.3 million tons (2.3 % ), Container Ships by 1.1 million tons ( 0.2 % ) and Ro/Ro by 0.2 million tons(3.8 %) and Others Ships by 0.3 tons 6.5 %).

## **FLAGS:**

99 different ship flags were represented in the Suez Canal traffic this year, against 96 ship flags in 2012 also. On the top of these flags were Panama, Liberia and Marshall (Is.).

## **CARGO TRAFFIC:**

Transiting goods traffic showed an increase of 14.5 million tons (2.0 %) this year.

Southbound goods registered an increase of 1.5 million tons (0.4 %) and the northbound goods increased by 13.0 million tons (3.7 %).

The most important areas in goods traffic north the Canal were North, west Europe shared (28.9 %) from the total goods transit SCA and North Mediterranean shared (20.6 %) and of south the Canal were South East Asia shared ( 32.1 % ) and Arabian Gulf shared ( 24.1 % ) .

Southbound Oil & Products quantities decreased by 1.3 million tons ( 1.9 % ) , while Northbound quantities increased by 10.5 million tons ( 13.4 % ) .

# Part 1 SHIP TRAFFIC



## 1- TRAFFIC EVOLUTION

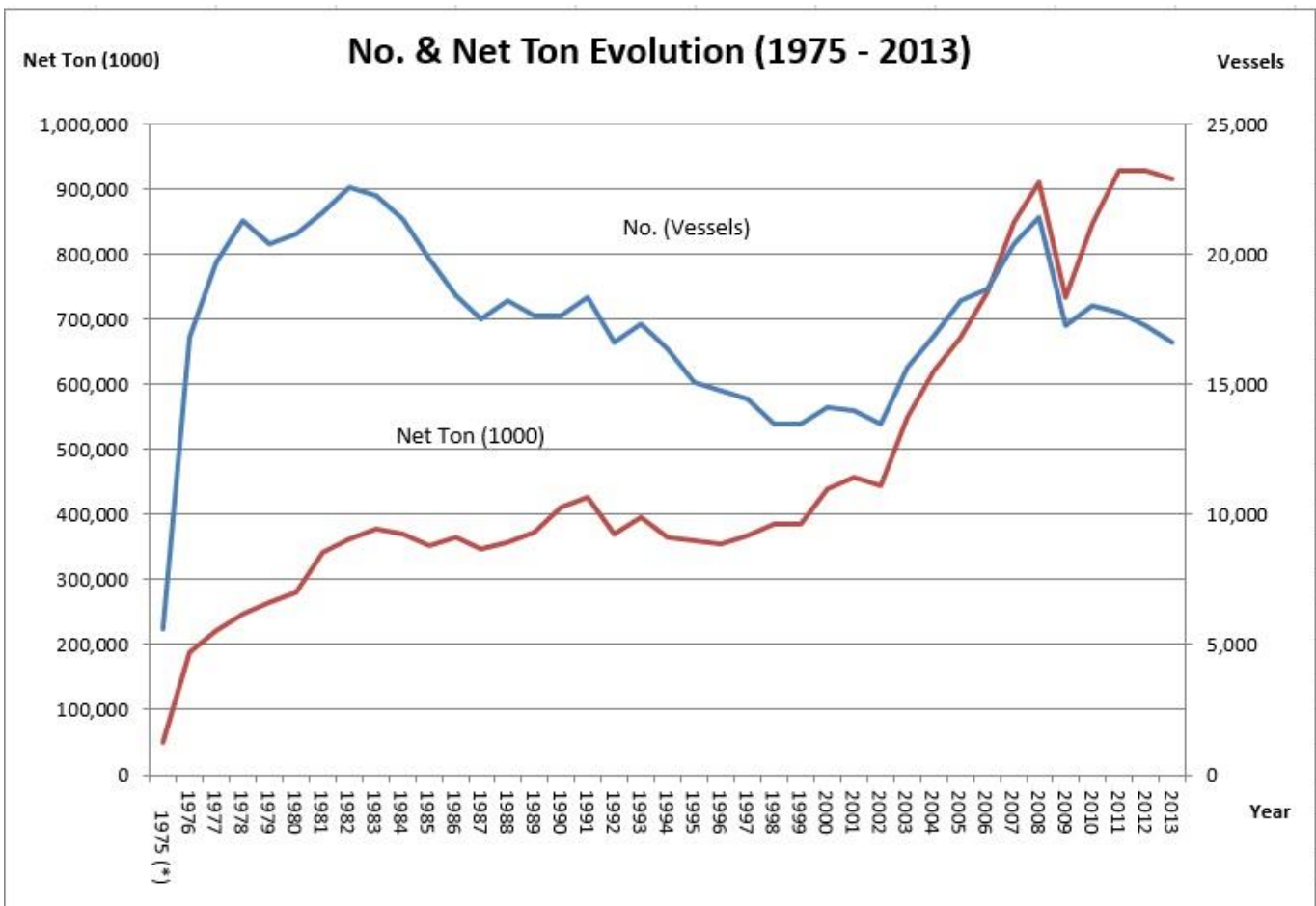
Table (1)  
NO & Net Ton Evolution (1975 - 2013)

Year	NO (Vessel)		Net Ton (1000)	
	Total	Daily Avg.	Total	Daily Avg.
1975 (*)	5,579	26.6	50,441	240.2
1976	16,806	45.9	187,757	513.0
1977	19,703	54.0	220,477	604.0
1978	21,266	58.3	248,260	680.2
1979	20,363	55.8	266,171	729.2
1980	20,795	56.8	281,305	768.6
1981	21,577	59.1	342,356	938.0
1982	22,545	61.8	363,538	996.0
1983	22,224	60.9	378,226	1,036.2
1984	21,361	58.4	371,039	1,013.8
1985	19,791	54.2	352,579	966.0
1986	18,403	50.4	366,076	1,002.9
1987	17,541	48.1	347,038	950.8
1988	18,190	49.7	356,913	975.2
1989	17,628	48.3	373,429	1,023.1
1990	17,664	48.4	410,322	1,124.2
1991	18,326	50.2	426,449	1,168.4
1992	16,629	45.4	369,779	1,010.3
1993	17,318	47.4	396,550	1,086.4
1994	16,370	44.8	364,487	998.6
1995	15,051	41.2	360,372	987.3
1996	14,731	40.2	354,974	969.9
1997	14,430	39.5	368,720	1,010.2
1998	13,472	36.9	386,069	1,057.7
1999	13,490	37.0	384,994	1,054.8
2000	14,142	38.6	439,041	1,199.6
2001	13,986	38.3	456,113	1,249.6
2002	13,447	36.8	444,786	1,218.6
2003	15,667	42.9	549,381	1,505.2
2004	16,850	46.0	621,253	1,697.4
2005	18,224	49.9	671,951	1,841.0
2006	18,664	51.1	742,708	2,034.8
2007	20,384	55.8	848,162	2,323.7
2008	21,415	58.7	910,059	2,486.5
2009	17,228	47.2	734,453	2,012.2
2010	17,993	49.3	846,389	2,318.9
2011	17,799	48.8	928,880	2,544.9
2012	17,224	47.2	928,472	2,543.8
2013	16,596	45.5	915,467	2,508.1

(\*) : Normal transit days = 210 .



**Figure (1)**  
NO & Net Ton Evolution (1975 - 2013)



## 2- MONTHLY TRAFFIC

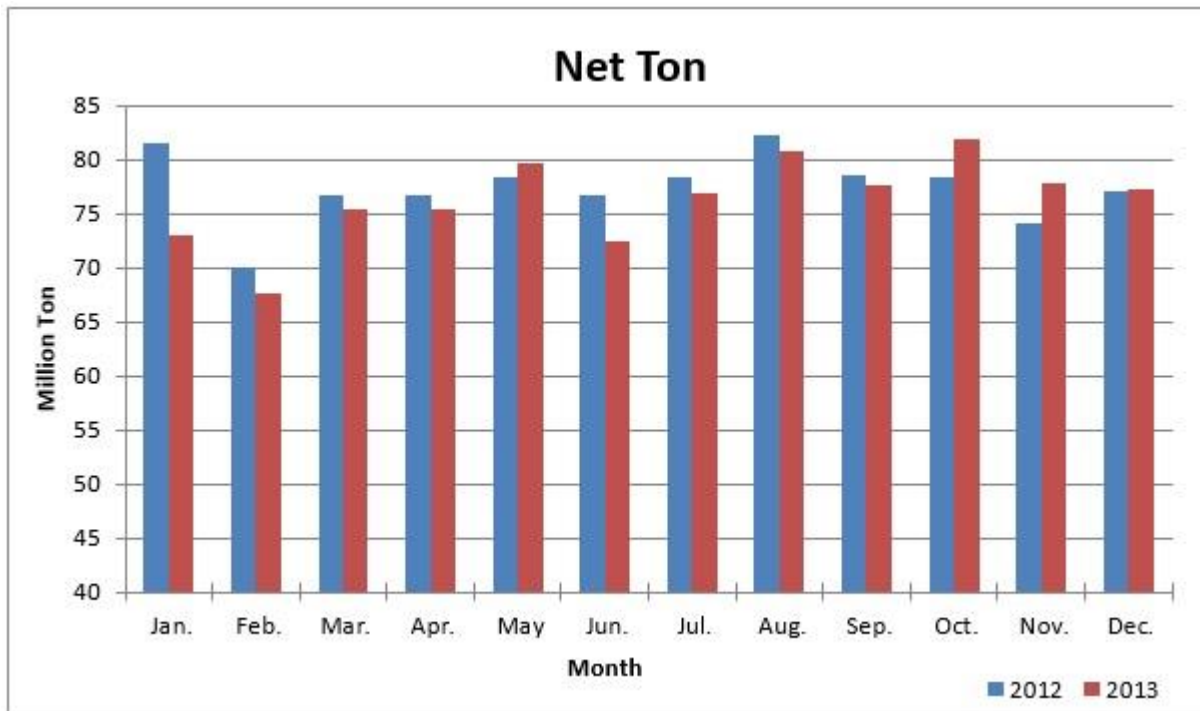
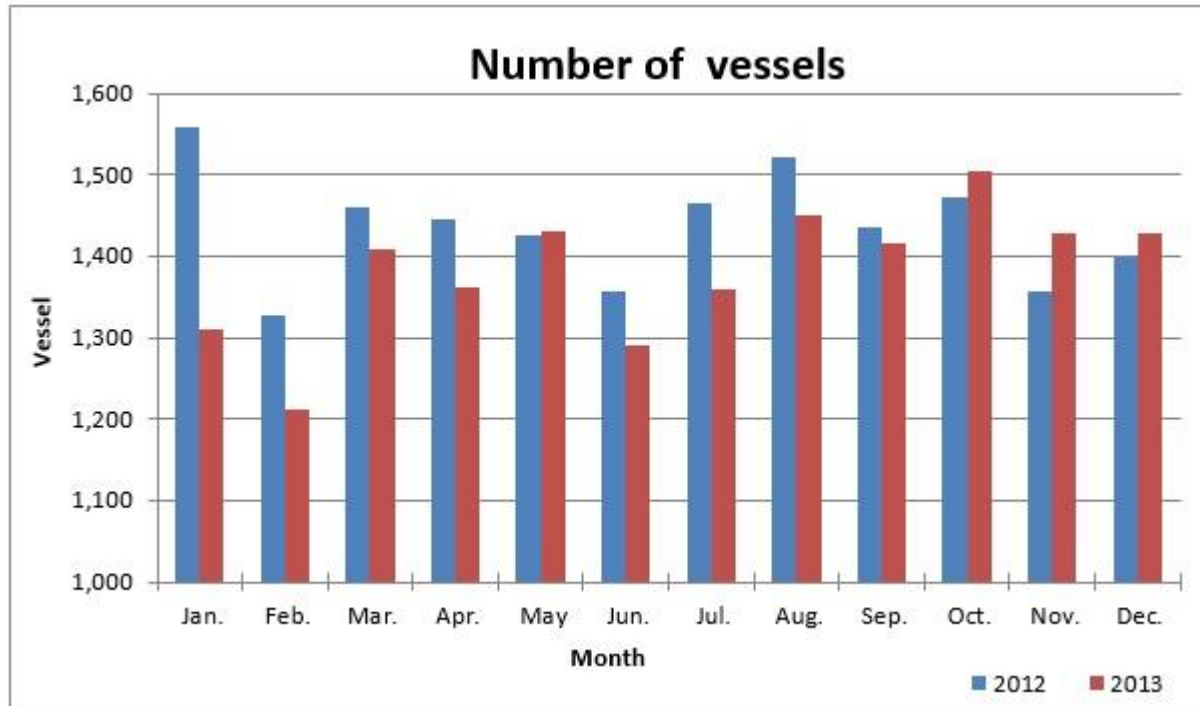


**Table (2)**  
**Monthly NO & Net Ton (2012, 2013)**

Month	NO (Vessel)		Net Ton (1000)	
	2012	2013	2012	2013
Jan.	1,559	1,311	81,514	73,023
Feb.	1,328	1,211	70,039	67,635
Mar.	1,460	1,407	76,671	75,297
Apr.	1,444	1,361	76,750	75,289
May	1,425	1,431	78,245	79,695
Jun.	1,357	1,291	76,664	72,368
Jul.	1,465	1,360	78,349	76,924
Aug.	1,522	1,449	82,205	80,798
Sep.	1,435	1,415	78,559	77,599
Oct.	1,473	1,503	78,335	81,818
Nov.	1,357	1,428	74,151	77,813
Dec.	1,399	1,429	76,990	77,208
<b>Total</b>	<b>17,224</b>	<b>16,596</b>	<b>928,472</b>	<b>915,467</b>



**Figure (2)**  
**Monthly Traffic (2012, 2013)**





### 3-TRAFFIC BY SHIP TYPE

**Table (3)**  
**NO & Net Ton by Ship Type (2012, 2013)**

Ship Type	NO (Vessel)			Net Ton (1000)		
	2012	2013	%	2012	2013	%
Tankers	3,639	3,594	-1.2	140,833	144,991	3.0
LNG	800	649	-18.9	88,636	70,316	-20.7
Bulk Carriers	2,936	2,873	-2.1	98,880	101,164	2.3
Combined Carriers	17	0	-100.0	1,043	0	-100.0
General Cargo	1,415	1,385	-2.1	15,225	15,117	-0.7
Container Ships	6,332	6,014	-5.0	507,138	508,220	0.2
Ro/Ro Ships	284	266	-6.3	5,845	6,070	3.8
Car Carriers	1,041	1,024	-1.6	62,910	61,579	-2.1
Passenger Ships	85	76	-10.6	3,351	3,099	-7.5
Others	675	715	5.9	4,611	4,911	6.5
<b>Total</b>	<b>17,224</b>	<b>16,596</b>	<b>-3.6</b>	<b>928,472</b>	<b>915,467</b>	<b>-1.4</b>

(3-1)-TANKERS:



**Table(4)**  
**Tankers Traffic (2012, 2013)**

Direction	NO (Vessel)			Net Ton (1000)		
	2012	2013	%	2012	2013	%
<b>North/South:</b>						
Laden	1,356	1,372	1.2	48,939	48,504	-0.9
In ballast	305	281	-7.9	9,857	11,098	12.6
Sub-Total	1,661	1,653	-0.5	58,796	59,602	1.4
<b>South/North:</b>						
Laden	1,707	1,706	-0.1	69,671	75,806	8.8
In ballast	271	235	-13.3	12,366	9,583	-22.5
Sub-Total	1,978	1,941	-1.9	82,037	85,389	4.1
<b>Total</b>	<b>3,639</b>	<b>3,594</b>	<b>-1.2</b>	<b>140,833</b>	<b>144,991</b>	<b>3.0</b>

(3-2)-LNG:

**Table (5)**  
**LNG Traffic (2012, 2013)**

Direction	NO (Vessel)			Net Ton (1000)		
	2012	2013	%	2012	2013	%
<b>North/South:</b>						
Laden	89	76	-14.6	8,452	7,354	-13.0
In ballast	302	240	-20.5	35,075	27,089	-22.8
Sub-Total	391	316	-19.2	43,527	34,443	-20.9
<b>South/North:</b>						
Laden	326	261	-19.9	37,238	28,914	-22.4
In ballast	83	72	-13.3	7,871	6,959	-11.6
Sub-Total	409	333	-18.6	45,109	35,873	-20.5
<b>Total</b>	<b>800</b>	<b>649</b>	<b>-18.9</b>	<b>88,636</b>	<b>70,316</b>	<b>-20.7</b>

(3-3)-BULK CARRIERS:

**Table (6)**  
Bulk Carr. Traffic (2012, 2013)

Direction	NO (Vessel)			Net Ton(1000)		
	2012	2013	%	2012	2013	%
<b>North/South:</b>						
Laden	1,678	1,621	-3.4	56,315	58,083	3.1
In ballast	5	10	100.0	91	175	92.3
Sub-Total	1,683	1,631	-3.1	56,406	58,258	3.3
<b>South/North:</b>						
Laden	555	584	5.2	16,565	17,966	8.5
In ballast	698	658	-5.7	25,909	24,940	-3.7
Sub-Total	1,253	1,242	-0.9	42,474	42,906	1.0
<b>Total</b>	<b>2,936</b>	<b>2,873</b>	<b>-2.1</b>	<b>98,880</b>	<b>101,164</b>	<b>2.3</b>

(3-4)-COMBINED CARRIERS:

**Table(7)**  
Combined Carr. Traffic (2012, 2013)

	NO (Vessel)			Net Ton (1000)		
	2012	2013	%	2012	2013	%
Laden	12	0	-100.0	572	0	-100.0
In ballast	5	0	-100.0	471	0	-100.0
<b>Total</b>	<b>17</b>	<b>0</b>	<b>-100.0</b>	<b>1,043</b>	<b>0</b>	<b>-100.0</b>



(3-5)-GENERAL CARGO SHIPS:

Table (8)

General Cargo Ships Traffic (2012, 2013)

	NO (Vessel)			Net Ton (1000)		
	2012	2013	%	2012	2013	%
Laden	1,241	1,211	-2.4	13,542	13,380	-1.2
In ballast	174	174	0.0	1,683	1,737	3.2
<b>Total</b>	<b>1,415</b>	<b>1,385</b>	<b>-2.1</b>	<b>15,225</b>	<b>15,117</b>	<b>-0.7</b>

(3-6)-CONTAINER SHIPS:

Table (9)

Container Ships Traffic (2012, 2013)

	NO (Vessel)			Net Ton (1000)		
	2012	2013	%	2012	2013	%
Laden	6,279	5,950	-5.2	505,525	506,326	0.2
In ballast	53	64	20.8	1,613	1,894	17.4
<b>Total</b>	<b>6,332</b>	<b>6,014</b>	<b>-5.0</b>	<b>507,138</b>	<b>508,220</b>	<b>0.2</b>

(3-7)- Ro/Ro SHIPS:

Table (10)

Ro/Ro Ships Traffic (2012, 2013)

	NO (Vessel)			Net Ton (1000)		
	2012	2013	%	2012	2013	%
Laden	223	230	3.1	5,254	5,692	8.3
In ballast	61	36	-41.0	591	378	-36.0
<b>Total</b>	<b>284</b>	<b>266</b>	<b>-6.3</b>	<b>5,845</b>	<b>6,070</b>	<b>3.8</b>

(3-8)- CAR CARRIERS:

Table (11)

Car Carr. Traffic (2012, 2013)

	NO (Vessel)			Net Ton (1000)		
	2012	2013	%	2012	2013	%
Laden	1,036	1,015	-2.0	62,687	61,259	-2.3
In ballast	5	9	80.0	223	320	43.5
<b>Total</b>	<b>1,041</b>	<b>1,024</b>	<b>-1.6</b>	<b>62,910</b>	<b>61,579</b>	<b>-2.1</b>

(3-9)- PASSENGER SHIPS:

Table (12)

Passenger Ships Traffic (2012, 2013)

	NO (Vessel)			Net Ton (1000)		
	2012	2013	%	2012	2013	%
Laden	69	64	-7.2	3,121	2,970	-4.8
In ballast	16	12	-25.0	230	129	-43.9
<b>Total</b>	<b>85</b>	<b>76</b>	<b>-10.6</b>	<b>3,351</b>	<b>3,099</b>	<b>-7.5</b>

(3-10)-OTHER SHIPS:

Table (13)

Other Ships Traffic (2012, 2013)

	NO (Vessel)			Net Ton (1000)		
	2012	2013	%	2012	2013	%
Laden	639	672	5.2	3,895	4,290	10.1
In ballast	36	43	19.4	716	621	-13.3
<b>Total</b>	<b>675</b>	<b>715</b>	<b>5.9</b>	<b>4,611</b>	<b>4,911</b>	<b>6.5</b>



## 4 - TRAFFIC BY FLAG



Table (15)

### NO & Net Ton by Flag (2012, 2013)

No.	Ship Flag	NO (Vessel)			Net Ton (1000)		
		2012	2013	%	2012	2013	%
1	Panama	2895	2638	-8.9	169608	156022	-8.0
2	Liberia	2466	2601	5.5	142197	150617	5.9
3	Marshall Islands	1349	1308	-3.0	91868	83994	-8.6
4	Hong Kong	1084	1089	0.5	68746	74302	8.1
5	Singapore	791	898	13.5	41756	55199	32.2
6	United Kingdom	710	574	-19.2	49584	42353	-14.6
7	Malta	917	916	-0.1	39287	41678	6.1
8	Bahamas	792	632	-20.2	49751	40944	-17.7
9	Denmark	501	459	-8.4	39231	36764	-6.3
10	Germany	513	416	-18.9	37682	34653	-8.0
11	Greece	496	436	-12.1	32149	28198	-12.3
12	United States	490	427	-12.9	20975	18951	-9.6
13	Norway	317	336	6.0	13609	15339	12.7
14	France	203	201	-1.0	14646	15170	3.6
15	Isle Of Man	130	161	23.8	7917	13314	68.2
16	Cyprus	221	223	0.9	9248	9932	7.4
17	China	202	215	6.4	9660	9819	1.6
18	Italy	287	283	-1.4	10359	9772	-5.7
19	Tanzania	91	148	62.6	2067	7008	239.0
20	Saudi Arabia	145	159	9.7	5004	6120	22.3
21	Turkey	327	214	-34.6	8506	5967	-29.8
22	Netherlands	163	155	-4.9	5640	5169	-8.4
23	Taiwan	12	59	391.7	1028	5149	400.9
24	Bermuda	77	71	-7.8	5224	5138	-1.6
25	Antigua & Barbuda	399	414	3.8	4472	4212	-5.8
26	Cayman Islands	196	177	-9.7	4330	3955	-8.7
27	India	90	88	-2.2	3325	3591	8.0
28	Japan	74	51	-31.1	4698	3365	-28.4



Table (15)

## NO &amp; Net Ton by Flag (2012, 2013)

(Cont.)

No.	Ship Flag	NO (Vessel)			Net Ton (1000)		
		2012	2013	%	2012	2013	%
29	Malaysia	57	42	-26.3	2488	1798	-27.7
30	Sweden	33	27	-18.2	2235	1792	-19.8
31	Philippines	79	62	-21.5	1653	1665	0.7
32	Kuwait	25	27	8.0	1619	1602	-1.1
33	Gibraltar	49	63	28.6	731	1581	116.3
34	South Korea	63	42	-33.3	2478	1389	-43.9
35	United Arab Emirates	25	32	28.0	1242	1375	10.7
36	Iran	6	36	500.0	125	1315	952.0
37	Saint Vincent	128	121	-5.5	1716	1296	-24.5
38	Dominican Republic	0	14	----	0	1295	----
39	Bahrain	35	23	-34.3	2212	1280	-42.1
40	Qatar	28	23	-17.9	1405	1224	-12.9
41	Belgium	24	27	12.5	1298	1007	-22.4
42	Egypt	114	75	-34.2	1549	931	-39.9
43	Luxembourg	8	25	212.5	172	927	439.0
44	Spain	29	32	10.3	1664	830	-50.1
45	Tuvalu	31	25	-19.4	1122	579	-48.4
46	Libya	38	9	-76.3	2549	515	-79.8
47	Saint Kitts And Nevi	19	36	89.5	239	473	97.9
48	Belize	51	42	-17.6	453	451	-0.4
49	Croatia	28	20	-28.6	703	435	-38.1
50	Russia	31	51	64.5	273	407	49.1
51	Dominica	41	7	-82.9	2912	362	-87.6
52	Cook Islands	14	23	64.3	95	299	214.7
53	Togo	21	44	109.5	186	292	57.0

Table (15)

## NO &amp; Net Ton by Flag (2012, 2013)

(Cont.)

No.	Ship Flag	NO (Vessel)			Net Ton (1000)		
		2012	2013	%	2012	2013	%
54	Switzerland	3	17	466.7	60	289	381.7
55	Ethiopia	0	13	----	0	256	----
56	Seychelles	3	3	0.0	244	244	0.0
57	Vanuatu	26	13	-50.0	632	226	-64.2
58	Vatican City State	0	9	----	0	209	----
59	Thailand	19	11	-42.1	277	208	-24.9
60	Barbados	17	12	-29.4	350	198	-43.4
61	Morocco	2	6	200.0	6	195	3150.0
62	Portugal	2	5	150.0	4	188	4600.0
63	Curacao	19	15	-21.1	186	183	-1.6
64	Pakistan	5	7	40.0	71	161	126.8
65	Brazil	1	9	800.0	3	134	4366.7
66	Sierra Leone	29	27	-6.9	321	125	-61.1
67	Bangladesh	10	5	-50.0	243	111	-54.3
68	Comoros	28	29	3.6	193	107	-44.6
69	Cambodia	7	23	228.6	36	87	141.7
70	Tunisia	6	5	-16.7	130	80	-38.5
71	North Korea	1	2	100.0	6	78	1200.0
72	Bulgaria	10	4	-60.0	143	69	-51.7
73	Honduras	6	8	33.3	67	65	-3.0
74	Moldova	25	10	-60.0	264	56	-78.8
75	Austria	0	6	----	0	56	----
76	Maldives	0	22	----	0	46	----
77	Israel	8	10	25.0	17	36	111.8
78	Lebanon	3	5	66.7	20	33	65.0
79	Oman	4	5	25.0	46	32	-30.4
80	Vietnam	6	4	-33.3	129	31	-76.0
81	Lithuania	0	4	----	0	28	----
82	Montenegro	0	1	----	0	22	----



Table (15)

## NO &amp; Net Ton by Flag (2012, 2013)

(Cont.)

No.	Ship Flag	NO (Vessel)			Net Ton (1000)		
		2012	2013	%	2012	2013	%
83	Indonesia	5	3	-40.0	19	18	-5.3
84	Sri Lanka	1	3	200.0	5	15	200.0
85	Jordan	2	3	50.0	5	13	160.0
86	Madeira	19	1	-94.7	543	11	-98.0
87	Ireland	1	1	0.0	9	9	0.0
88	Ukraine	1	1	0.0	1	5	400.0
89	Iraq	0	1	----	0	5	----
90	Canada	2	3	50.0	7	4	-42.9
91	Poland	0	2	----	0	4	----
92	Australia	1	2	100.0	2	4	100.0
93	Iceland	0	2	----	0	3	----
94	Kiribati	1	2	100.0	1	3	200.0
95	Greenland	0	1	----	0	2	----
96	Nigeria	0	1	----	0	1	----
97	Mexico	0	1	----	0	1	----
98	Kenya	1	1	0.0	2	1	-50.0
99	Finland	8	1	-87.5	191	*	-100.0
100	Bolivia	4	0	-100.0	273	0	-100.0
101	Mongolia	8	0	-100.0	194	0	-100.0
102	Syria	3	0	-100.0	30	0	-100.0
103	Latvia	2	0	-100.0	23	0	-100.0
104	Wallis And Futuna	1	0	-100.0	11	0	-100.0
105	Romania	2	0	-100.0	8	0	-100.0
106	Georgia	4	0	-100.0	5	0	-100.0
107	Chile	1	0	-100.0	4	0	-100.0
108	Mauritius	1	0	-100.0	4	0	-100.0
109	Azerbaijan	1	0	-100.0	1	0	-100.0
<b>Total</b>		17224	16596	-3.6	928472	915467	-1.4

(\*): Less than 1000 tons

## Part 2

### CARGO TRAFFIC

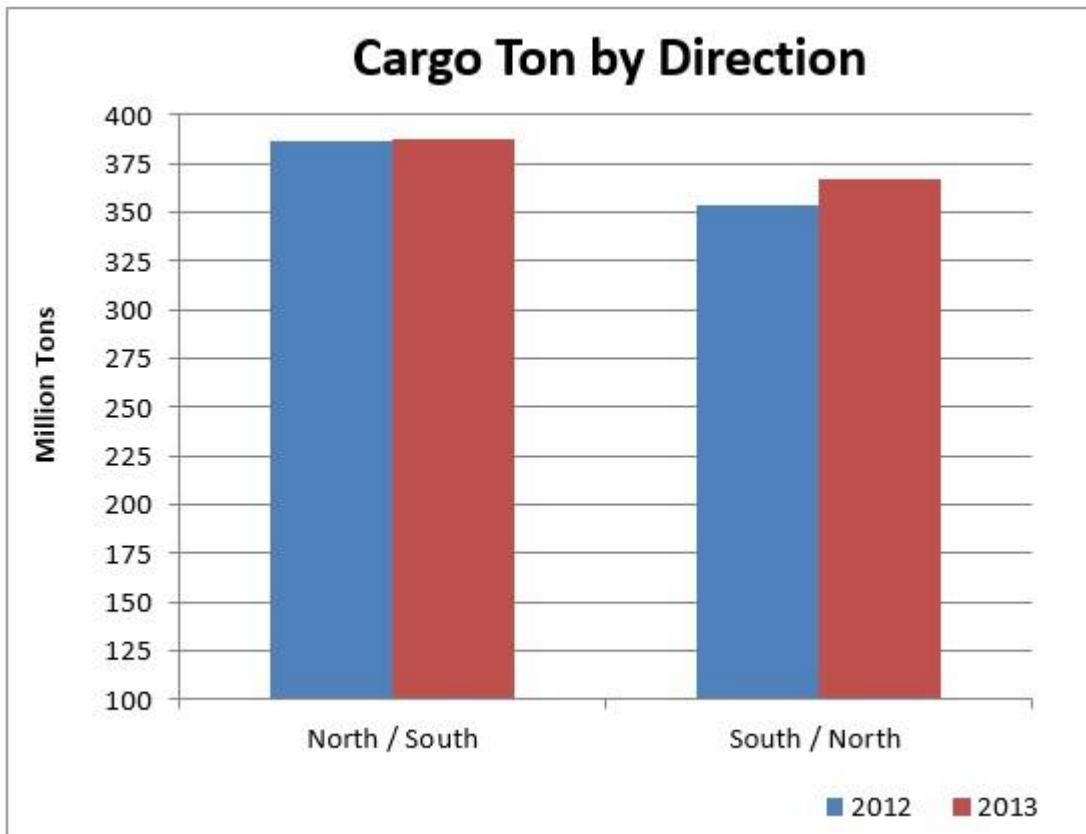
#### 1-CARGO TON BY DIRECTION

Table (16)  
Cargo Ton by Direction (2012, 2013)

(1000Ton)

Direction	2012	2013	%
North/South	386,372	387,901	0.4
South/North	353,542	366,560	3.7
Total	739,914	754,461	2.0

Figure (3)





## 2-CARGO TON BY REGION

Table(17)  
Cargo Ton (From & To) by Region (2013)



suezcanal.gov.eg

Region	Cargo Ton (1000)	%
<b>North the Canal:</b>		
East & S.E. Mediterranean	149,008	19.8
North Mediterranean	155,233	20.6
West & S.W. Mediterranean	80,037	10.6
Black Sea	69,777	9.2
North, West Europe	218,065	28.9
Baltic Sea	6,922	0.9
America	53,993	7.2
Others	21,426	2.8
<b>Total</b>	<b>754,461</b>	<b>100</b>
<b>South the Canal:</b>		
Red Sea	168,828	22.4
East Africa & Aden	5,446	0.7
Arabian Gulf	181,798	24.1
South Asia	75,900	10.1
South East Asia	241,860	32.1
Far East	77,085	10.2
Australia	3,544	0.5
Others	0	0.0
<b>Total</b>	<b>754,461</b>	<b>100.0</b>

### 3- CARGO TON BY COUNTRIES



**Table (18)**  
**Cargo Ton (From & To) by Countries (2013)**

Country	Cargo Ton (1000)	%
<b>North the Canal:</b>		
Netherlands	77,744	10.3
Italy	77,640	10.3
Spain	63,460	8.4
Egypt (Med.)	58,707	7.8
U. K.	53,272	7.1
Turkey	45,171	6.0
Ukraine	42,175	5.6
U. S. A.	40,794	5.4
France	39,753	5.3
Greece	33,069	4.4
Other	222,676	29.5
<b>Total</b>	<b>754,461</b>	<b>100.0</b>
<b>South the Canal:</b>		
Saudi Arabia	162,185	21.5
Singapore	13,385	1.8
Malaysia	85,682	11.4
China	47,358	6.3
Oman	45,212	6.0
India	44,433	5.9
U. A. E.	42,916	5.7
Sri lanka	25,744	3.4
Qatar	22,567	3.0
Iraq	18,333	2.4
Other	246,646	32.7
<b>Total</b>	<b>754,461</b>	<b>100.0</b>

## 4- SOUTHBOUND CARGO TRAFFIC

(4-1)-By Cargo Type:

**Table (19)**  
Southbound Cargo Ton by Cargo Type (2012, 2013)

(1000Ton)

Cargo Type	2012	2013	%
<b>Oil &amp; Products:</b>			
Crude Oil	23830	18170	-23.8
Motor Spirit	5545	6773	22.1
Gas oil & Diesel oil	5238	2665	-49.1
Fuel oil	21562	19087	-11.5
Naphtha	6586	12276	86.4
L.P.G.	593	867	46.2
Others	2104	4365	107.5
<b>Total</b>	<b>65,458</b>	<b>64,203</b>	<b>-1.9</b>
<b>Other Goods:</b>			
L.N.G.	5528	4853	-12.2
Cereals	27120	33699	24.3
Fertilizers	10731	8113	-24.4
Fabricated Metals	19061	14256	-25.2
Cement	186	80	-57.0
Chemicals	10474	9376	-10.5
Coal & Coke	3185	3101	-2.6
Food Stuffs	2453	2362	-3.7
Machinery & Parts	3724	3676	-1.3
Minerals & Rocks	506	407	-19.6
Ores & Metals	29848	32757	9.7
Oil Seeds	1229	2125	72.9
Wood, Timber & Lumber	132	270	104.5
Molasses	207	111	-46.4
Vegetable Oils	2004	2347	17.1
Containerized Cargo	200950	202460	0.8
Others	3576	3705	3.6
<b>Total</b>	<b>320,914</b>	<b>323,698</b>	<b>0.9</b>
<b>Grand Total</b>	<b>386,372</b>	<b>387,901</b>	<b>0.4</b>

(4-2)- By Exporting & Importing Countries:

1- Oil & Products:



**Table (20-1)**

**Southbound Oil & Products by Exporting & Importing Countries (2013)**

<b>Exporting Country</b>	<b>Cargo Ton (1000)</b>	<b>Importing Country</b>	<b>Cargo Ton (1000)</b>
Turkey	10,227	Singapore	17,324
Cyprus	6,948	China	8,300
Netherlands	6,560	India	5,648
Libya	5,348	Saudi Arabia	5,235
Malta	5,012	Indonesia	4,224
Algeria	4,721	South Korea	4,176
Russia	3,567	U. A. E.	3,837
Spain	2,609	Egypt ( Red Sea )	2,990
Italy	2,460	Thailand	2,712
Greece	2,282	Japan	2,161
Denmark	2,121	Jordan	1,460
U. S. A.	2,054	Taiwan	1,161
Ukraine	1,937	North Korea	1,054
U. K.	1,361	Oman	975
Estonia	1,189	Yemen	697
Egypt (Med.)	1,172	Australia	622
Belgium	1,087	Vietnam	384
Norway	1,063	Malaysia	345
France	592	Sri lanka	184
Latevia	496	Sudan	133
Others	1,397	Others	581
<b>Total</b>	<b>64,203</b>	<b>Total</b>	<b>64,203</b>

## 2- Cereals :



**Table (20-2)**  
**Southbound Cereals by Exporting & Importing Countries (2013)**

<b>Exporting Country</b>	<b>Cargo Ton (1000)</b>	<b>Importing Country</b>	<b>Cargo Ton (1000)</b>
Ukraine	9,919	Saudi Arabia	11,468
Russia	5,180	Iran	4,713
Romania	3,550	South Korea	2,623
Germany	3,388	Jordan	2,067
France	1,769	Yemen	1,501
Spain	1,716	Sudan	1,286
U. S. A.	1,384	Japan	1,193
Letwania	1,257	Kenya	1,020
Turkey	600	Singapore	895
Latvia	583	Egypt	886
Brazil	573	Bangladesh	691
Greece	477	Djibouti	588
Bulgaria	407	U. A. E.	549
Canada	359	Thailand	539
Others	2,537	Others	3,680
<b>Total</b>	<b>33,699</b>	<b>Total</b>	<b>33,699</b>

### 3- Ores and Metals :



**Table (20-3)**  
**Southbound Ores and Metals by Exporting & Importing Countries (2013)**

<b>Exporting Country</b>	<b>Cargo Ton (1000)</b>	<b>Importing Country</b>	<b>Cargo Ton (1000)</b>
Ukraine	17,302	China	19,079
Russia	4,719	Singapore	4,827
Norway	4,080	Saudi Arabia	1,929
Turkey	2,006	Japan	1,697
Romania	1,658	Qatar	1,383
Greece	747	India	942
Spain	518	U.A.E.	547
U. K.	264	Bahrain	530
Finland	200	South Africa	491
Canada	176	South Korea	325
Trinidad & Tobago	175	Sri lanka	174
Italy	124	North Korea	171
Albania	109	Egypt ( Red Sea )	134
Cyprus	105	Indonesia	124
Others	574	Others	404
<b>Total</b>	<b>32,757</b>	<b>Total</b>	<b>32,757</b>

4- Fabricated Metals:



**Table (20-4)**  
**Southbound Fabricated Metals by Exporting & Importing Countries (2013)**

<b>Exporting Country</b>	<b>Cargo Ton (1000)</b>	<b>Importing Country</b>	<b>Cargo Ton (1000)</b>
Turkey	4,485	Saudi Arabia	3,856
Ukraine	3,323	U. A. E.	1,465
Russia	2,282	Indonesia	1,374
U. K.	726	Thailand	1,191
Belgium	514	Egypt ( Red Sea )	804
Canada	416	Singapore	682
U. S. A.	415	Yemen	610
Brazil	368	Djibouti	587
Spain	341	India	486
Greece	203	Jordan	432
Croatia	178	Iraq	399
Italy	161	Qatar	369
Romania	153	Bangladesh	354
Germany	142	China	246
Others	549	Others	1,401
<b>Total</b>	<b>14,256</b>	<b>Total</b>	<b>14,256</b>

## 5- Chemicals:



**Table (20-5)**  
**Southbound Chemicals by Exporting & Importing Countries (2013)**

<b>Exporting Country</b>	<b>Cargo Ton (1000)</b>	<b>Importing Country</b>	<b>Cargo Ton (1000)</b>
Morocco	2,261	India	3,773
Netherlands	1,483	China	1,281
Spain	1,312	Singapore	1,238
Ukraine	1,286	Pakistan	822
U. S. A.	470	Saudi Arabia	486
Senegal	454	Egypt ( Red Sea )	419
France	354	Indonesia	348
Russia	313	Jordan	297
Italy	311	U. A. E.	191
Israel ( Med )	216	South Korea	135
Greece	189	Sri lanka	87
Belgium	137	Hong Kong	61
Turkey	132	Malaysia	58
Egypt (Med.)	121	Australia	55
Others	337	Others	125
<b>Total</b>	<b>9,376</b>	<b>Total</b>	<b>9,376</b>



## 6- Fertilizers:



**Table (20-6)**  
**Southbound Fertilizers by Exporting & Importing Countries (2013)**

<b>Exporting Country</b>	<b>Cargo Ton (1000)</b>	<b>Importing Country</b>	<b>Cargo Ton (1000)</b>
Russia	1,570	India	3,022
Morocco	1,208	China	898
Ukraine	987	Bangladesh	836
Letwania	661	Thailand	557
Spain	565	Pakistan	476
Israel ( Med )	516	Malaysia	341
U. S. A.	414	Indonesia	335
Norway	291	Vietnam	316
Tunisia	274	Singapore	241
Malta	217	Egypt ( Red Sea )	197
Latvia	174	Saudi Arabia	155
Estonia	167	Kenya	121
Turkey	140	Philippines	103
Germany	130	Taiwan	85
Others	799	Others	430
<b>Total</b>	<b>8,113</b>	<b>Total</b>	<b>8,113</b>

**Table (20-7)**  
**Southbound L N G by Exporting & Importing Countries (2013)**

<b>Exporting Country</b>	<b>Cargo Ton (1000)</b>	<b>Importing Country</b>	<b>Cargo Ton (1000)</b>
Egypt ( Med )	2,331	Japan	1,317
Algeria	1,124	South Korea	831
Norway	324	India	453
Spain	303	Malaysia	400
Belgium	191	Taiwan	323
France	190	Saudi Arabia	323
Malta	127	North Korea	269
U. S. A.	68	China	253
U. K.	67	Singapore	250
Portugal	65	U. A. E.	193
Netherlands	60	Indonesia	63
Mexico	3	Thailand	63
Others	0	Others	115
<b>Total</b>	<b>4,853</b>	<b>Total</b>	<b>4,853</b>

**Table (21)**  
**Main Southbound Cargo by Region (2013)**

(1000 Ton)

Region	Oil & Products	Cereals	Ores & Metals	Fabricated Metals	Chemicals	Fertilizers	L N G	Others	Total
<b>Origins :</b>									
East & S.E. Mediterranean	18413	615	2,154	4,642	534	821	2,332	34,121	63,632
North Mediterranean	10343	1,509	991	628	715	429	316	66,700	81,631
West & S.W. Mediterranean	13031	1,758	551	390	1,872	1,364	1,427	21,849	42,242
Black Sea	5610	19,057	23,733	5,758	1,648	2,629	0	6,540	64,975
North , West Europe	12307	4,743	4,369	1,504	1,876	545	707	70,979	97,030
Baltic Sea	1689	2,226	299	0	0	1,112	0	610	5,936
America	2644	3,742	522	1,334	470	468	71	12,482	21,733
Others	166	49	138	0	2,261	745	0	7,363	10,722
<b>Total</b>	<b>64,203</b>	<b>33,699</b>	<b>32,757</b>	<b>14,256</b>	<b>9,376</b>	<b>8,113</b>	<b>4,853</b>	<b>220,644</b>	<b>387,901</b>
<b>Destinations :</b>									
Red Sea	10354	16,057	1,272	6,069	1,171	406	258	73,751	109,338
East Africa & Aden	132	1,471	640	82	0	212	0	1,984	4,521
Arabian Gulf	5218	7,754	3,396	2,924	251	112	310	46,701	66,666
South Asia	5961	1,702	1,178	1,059	4,682	4,440	516	19,179	38,717
South East Asia	24989	2,183	4,999	3,518	1,664	1,791	775	66,145	106,064
Far East	16927	4,532	21,272	604	1,553	1,086	2,994	11,363	60,331
Australia	622	0	0	0	55	66	0	1,521	2,264
Others	0	0	0	0	0	0	0	0	0
<b>Total</b>	<b>64,203</b>	<b>33,699</b>	<b>32,757</b>	<b>14,256</b>	<b>9,376</b>	<b>8,113</b>	<b>4,853</b>	<b>220,644</b>	<b>387,901</b>

## 5-NORTH BOUND CARGO TRAFFIC

(5-1)-BY Cargo Type:



**Table (22)**  
Northbound Cargo Ton by Cargo Type (2012, 2013)

(1000Ton)

Cargo Type	2012	2013	%
<b>Oil &amp; Products:</b>			
Crude Oil	45007	57080	26.8
Motor Spirit	19386	18866	-2.7
Gas oil & Diesel oil	10390	9747	-6.2
Fuel oil	240	138	-42.5
Naphtha	200	54	-73.0
L.P.G.	708	474	-33.1
Others	2831	2926	3.4
<b>Total</b>	<b>78,762</b>	<b>89,285</b>	<b>13.4</b>
<b>Other Goods:</b>			
L.N.G.	25756	19936	-22.6
Cereals	469	405	-13.6
Fertilizers	4691	4031	-14.1
Fabricated Metals	4615	6627	43.6
Cement	0	4	----
Chemicals	9393	9636	2.6
Coal & Coke	7919	7274	-8.1
Food Stuffs	345	486	40.9
Machinery & Parts	3823	3505	-8.3
Starch & Farinas	0	0	----
Minerals & Rocks	495	702	41.8
Ores & Metals	3592	2768	-22.9
Oil Seeds	1286	2370	84.3
Wood, Timber & Lumber	801	628	-21.6
Molasses	1160	901	-22.3
Vegetable Oils	10710	11641	8.7
Containerized Cargo	197009	203589	3.3
Others	2716	2772	2.1
<b>Total</b>	<b>274,780</b>	<b>277,275</b>	<b>0.9</b>
<b>Grand Total</b>	<b>353,542</b>	<b>366,560</b>	<b>3.7</b>

(5 -2)– By Exporting & Importing Countries:

1-Oil & Products:

**Table (23-1)**

Northbound Oil & Products by Exporting & Importing Countries (2013)

Exporting Country	Cargo Ton (1000)	Importing Country	Cargo Ton (1000)
Saudi Arabia	26,756	Netherlands	15,722
Iraq	17,358	U. S. A.	14,300
India	12,699	France	10,181
Kuwait	7,890	Italy	10,097
U. A. E.	7,556	Turkey	9,236
Iran	6,851	Spain	6,061
Oman	2,731	U. K.	5,017
Egypt ( Red Sea )	2,459	Egypt ( Med )	4,813
Singapore	1,977	Greece	2,964
Qatar	1,205	Canada	1,721
Malaysia	405	Israel ( Med )	1,608
Yemen	377	Morocco	1,184
South Korea	345	Malta	679
Bahrain	302	Lebanon	578
Indonesia	203	Belgium	536
Thailand	88	Syria	498
Jordan	82	Algeria	436
Ethiopia	1	Germany	353
Others	0	Others	3,301
<b>Total</b>	<b>89,285</b>	<b>Total</b>	<b>89,285</b>

2-LNG:



**Table (23-2)**  
**Northbound LNG by Exporting & Importing Countries (2013)**

<b>Exporting Country</b>	<b>Cargo Ton (1000)</b>	<b>Importing Country</b>	<b>Cargo Ton (1000)</b>
Qatar	17,933	U. K.	6,313
Oman	774	Italy	3,867
Yemen	676	Spain	3,138
U. A. E.	360	Belgium	2,327
Iraq	66	Mexico	1,514
Singapore	65	France	1,239
Kuwait	53	Canada	456
Malaysia	5	Portugal	311
South Korea	4	Turkey	283
Others	0	Others	488
<b>Total</b>	<b>19,936</b>	<b>Total</b>	<b>19,936</b>

### 3- Vegetable Oils:

**Table (23- 3)**  
Northbound Vegetable Oils by Exporting & Importing Countries (2013)

<b>Exporting Country</b>	<b>Cargo Ton (1000)</b>	<b>Importing Country</b>	<b>Cargo Ton (1000)</b>
Indonesia	4,656	Netherlands	4,619
Singapore	2,842	Spain	2,077
Malaysia	2,469	Italy	1,890
India	563	Turkey	935
Thailand	252	Russia	464
Sri lanka	174	Ukraine	372
Saudi Arabia	167	Greece	310
Egypt ( Red Sea )	158	Tunisia	151
Philippines	95	Denmark	145
Maldives	77	U. S. A.	129
Oman	43	Germany	118
Yemen	40	Algeria	88
U. A. E.	35	Israel ( Med )	77
Sudan	29	Malta	57
Others	41	Others	209
<b>Total</b>	<b>11,641</b>	<b>Total</b>	<b>11,641</b>

4- Chemicals:

**Table (23-4)**  
**Northbound Chemicals by Exporting & Importing Countries (2013)**

<b>Exporting Country</b>	<b>Cargo Ton (1000)</b>	<b>Importing Country</b>	<b>Cargo Ton (1000)</b>
Saudi Arabia	3,474	Turkey	1,792
U. A. E.	1,682	Netherlands	1,669
India	665	Spain	1,570
Malaysia	614	Morocco	1,218
Singapore	582	U. S. A.	576
Egypt ( Red Sea )	570	Malta	575
Oman	365	Belgium	537
Qatar	354	Italy	455
Kuwait	339	Tunisia	281
Indonesia	221	Egypt ( Med )	214
Jordan	160	France	164
Pakistan	146	Portugal	95
Bahrain	129	Senegal	79
Iran	89	Croatia	76
Others	246	Others	335
<b>Total</b>	<b>9,636</b>	<b>Total</b>	<b>9,636</b>



5- Coal & Coke:

**Table (23-5)**  
**Northbound Coal & Coke by Exporting & Importing Countries (2013)**

<b>Exporting Country</b>	<b>Cargo Ton (1000)</b>	<b>Importing Country</b>	<b>Cargo Ton (1000)</b>
Singapore	3,375	Italy	3,241
Indonesia	1,857	Turkey	1,231
Australia	657	Israel (Med.)	997
South Africa	552	Spain	816
Mozambique	260	Croatia	469
Sri lanka	226	Romania	353
Iran	132	Netherlands	77
India	85	France	66
Siberia	66	Norway	24
Others	64	Others	0
<b>Total</b>	<b>7,274</b>	<b>Total</b>	<b>7,274</b>

6- Fabricated Metals:

**Table (23-6)**

**Northbound Fabricated Metals by Exporting & Importing Countries (2013)**

<b>Exporting Country</b>	<b>Cargo Ton (1000)</b>	<b>Importing Country</b>	<b>Cargo Ton (1000)</b>
Singapore	2,659	Turkey	1,095
India	1,037	Italy	904
Saudi Arabia	767	Egypt ( Med )	866
China	583	Spain	652
Jordan	571	Lebanon	490
U. A. E.	184	Israel ( Med )	395
Iran	138	Algeria	367
South Korea	107	Croatia	336
Sudan	81	U. S. A.	284
Egypt ( Red Sea )	72	Belgium	184
Malaysia	63	Portugal	177
Taiwan	57	U. K.	168
Japan	50	Ukraine	115
North Korea	45	Greece	104
Others	213	Others	490
<b>Total</b>	<b>6,627</b>	<b>Total</b>	<b>6,627</b>

7- Fertilizers:

**Table (23-7)**  
**Northbound Fertilizers by Exporting & Importing Countries (2013)**

<b>Exporting Country</b>	<b>Cargo Ton (1000)</b>	<b>Importing Country</b>	<b>Cargo Ton (1000)</b>
Qatar	1,060	U. S. A.	2,818
U. A. E.	810	Turkey	383
Saudi Arabia	477	Spain	227
Jordan	446	Bulgaria	183
Oman	383	France	110
Kuwait	288	Poland	92
Bahrain	178	Canada	68
Iran	138	Belgium	64
Egypt ( Red Sea )	136	Italy	38
Pakistan	57	U. K.	29
Singapore	55	Romania	11
Israel ( R.s )	3	Netherlands	8
Others	0	Others	0
<b>Total</b>	<b>4,031</b>	<b>Total</b>	<b>4,031</b>



**Table (24)**  
**Main Northbound Cargo by Region (2013)**

(1000 Ton)

Region	Oil & Products	LNG	Vegetable Oil	Chemicals	Coal & Coke	Fabricated Metals	Fertilizers	Others	Total
<b>Origins :</b>									
Red Sea	7099	676	394	2,556	812	1,508	699	45,745	59,489
East Africa & Aden	0	0	0	16	0	0	0	909	925
Arabian Gulf	66470	19,187	78	4,655	132	404	3,220	20,986	115,132
South Asia	12698	0	814	884	312	1,077	57	21,341	37,183
South East Asia	2673	69	10,220	1,417	5,295	2,768	55	113,300	135,797
Far East	345	4	95	82	66	842	0	15,320	16,754
Australia	0	0	40	26	657	28	0	529	1,280
Others	0	0	0	0	0	0	0	0	0
<b>Total</b>	<b>89,285</b>	<b>19,936</b>	<b>11,641</b>	<b>9,636</b>	<b>7,274</b>	<b>6,627</b>	<b>4,031</b>	<b>218,130</b>	<b>366,560</b>
<b>Destinations :</b>									
East & S.E. Mediterranean	16823	283	1,068	2,208	2,228	2,922	383	59,461	85,376
North Mediterranean	17331	5,074	2,257	1,236	3,776	1,417	99	42,413	73,603
West & S.W. Mediterranean	6883	3,143	2,317	2,009	816	1,060	227	21,340	37,795
Black Sea	87	0	836	25	353	303	194	3,004	4,802
North , West Europe	29292	9,264	4,984	2,404	101	593	151	74,245	121,034
Baltic Sea	129	0	0	0	0	0	92	765	986
America	17728	2,172	159	602	0	324	2,885	8,391	32,261
Others	1012	0	20	1,152	0	8	0	8,511	10,703
<b>Total</b>	<b>89,285</b>	<b>19,936</b>	<b>11,641</b>	<b>9,636</b>	<b>7,274</b>	<b>6,627</b>	<b>4,031</b>	<b>218,130</b>	<b>366,560</b>