



AZM
1-10

Multi-Function
Escort Tug Boat

RASTAR 3200-W
90T BP

(90T BP) ASD TUGBOAT **RAstar 3200-W**

- ✓ High-performance multi-purpose ASD tugs.
- ✓ Designed and constructed as Terminal Escort Tugs by Robert Allan, equipped to meet Class FIFI-1 requirements.
- ✓ A forward winch and an aft winch for ship handling, towing, pushing, mooring.
- ✓ High maneuverability and sea-keeping

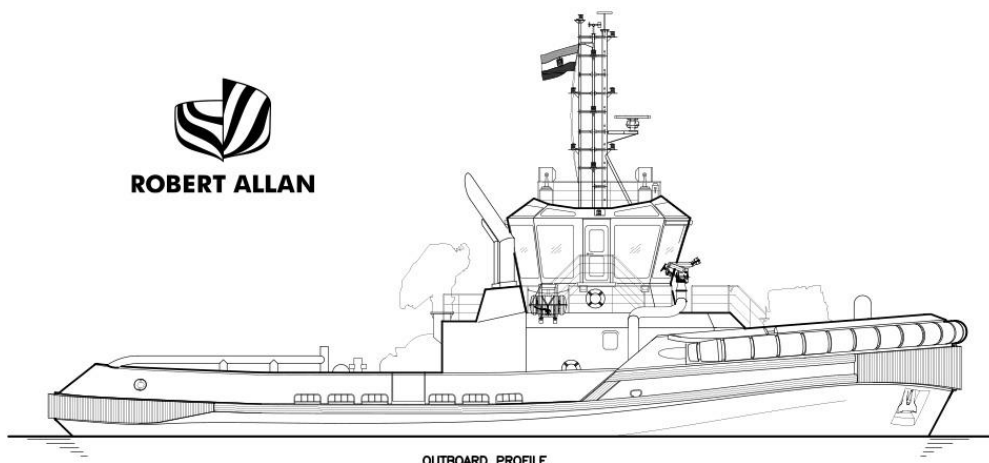


RASTAR 3200-W

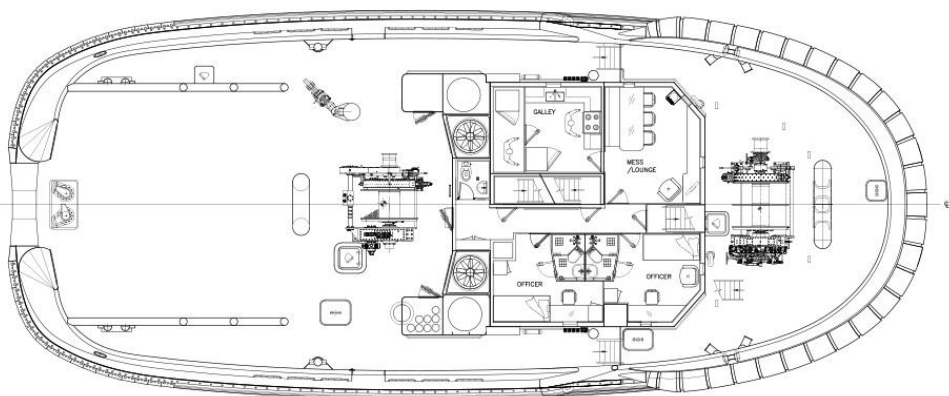
90T BP



ROBERT ALLAN



OUTBOARD PROFILE



MAIN DECK

**(10)
Ten** RASTAR 3200-W ASD tugs, built for Suez Canal Authority By South Red Sea Shipyard (SRSS) in Egypt.

Tug Name	Class register No	IMO No.
AZM 1	BV: 45253Q	1053183
AZM 3	BV: 45388M	1053195
AZM 5	BV: 45389N	1053200
AZM 7	BV: 45390P	1053212
AZM 9	BV: 45391Q	1053224
AZM 10	BV: 45392R	1053236
AZM 2	RINA: RI105761	1053250
AZM 4	RINA: RI105762	1053262
AZM 6	RINA: RI105763	1053274
AZM 8	RINA: RI105764	1053286

Technical Specifications

Length overall	32.00 m
Breadth Molded	13.20 m
Depth molded	5.50 m
Draft	6.30 m
Gross Tonnage	< 500
Bollard pull	90 T
Speed	12 Kn
Frame Spacing	600mm



Classification:

BV I ⚡ HULL, ⚡ MACH, AUT-UMS,
ESCORT, FIRE-FIGHTING SHIP 1-
WATER SPRAYING, COASTAL AREA,
INWATERSURVEY SEA AREA 2
(6 Tugs).

RINA C ⚡ Escort Tug, Fire-Fighting Ship
1 – Water Spraying, Coastal navigation
within Egyptian waters. *Additional
notation:* INWATER SURVEY, AUT-UMS.
(4 Tugs).



Main Engines:

2 * ABC- Marine diesel
engine , Type V12 DZC ,
MDO , Rated power
(kW) 2650 @1000RPM.



Propellers:

2 * Kongsberg ASD Z-Drive
Azimuth Thrusters, type US
255S P30/ FP, with rated
power (kW) 2600 @1000RPM
, in Kort Nozzles.



Auxiliary engines:

CAT C7.1 , 118 EKW, 148 KVA,
24V, 400 VOLT WYE, 50 Hz.



Deck machinery

Maker : IBERCISA - Spain

FW winch (Model: MR-MAN/H/200/2x200-60/24-D/1)

- Brake static capacity 255T
- Hydraulic Anchor Windless
- Max. continuous pull: 30 kN (for 30minutes)
- Maximum pull: 37.5 kN (for 2minutes)

AFT winch (Model: MR-H/100/300-56/1)

- Brake static capacity 255T (1st layer), 250bar

Towing Hook: SWL 100 tons

Towing pins: SWL 90 ton

Stern Roller: 1 m diameter
2.5 m length

Deck Crane: 2 Ton @ 8 m



Fi-Fi System:

- Equipped to meet Class FIFI-1 requirements

Pump: Marsis centrifugal pump,
2750 m³/h @ 120 m.

Monitors: 2x 1,200 m³/hour water ,
300 m³/hour foam

Accommodation:

Accommodations for **12 crew** members with Central Air-Conditioning System.

- 5 crew cabins with full suitable furniture
- Two cabins single bed for master & engineer

Tank Capacities

- Fuel Oil

200 Ton

- Fresh Water Ballast

30 Ton

- Potable Water

20 Ton

- Oily Water

4.0 m³

- Sludge

4.0 m³

- Foam

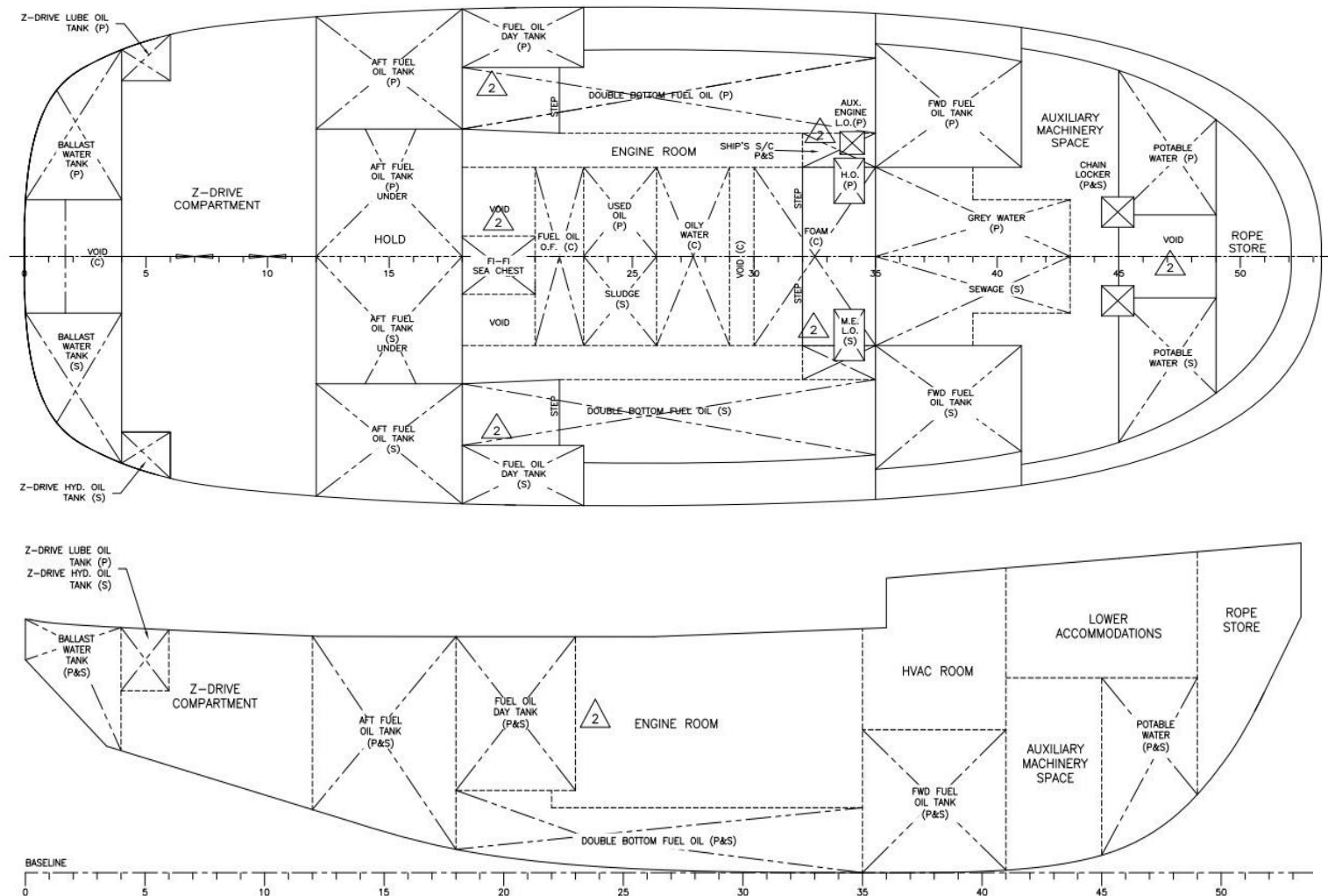
7.9 m³

- Sewage

5.8 m³

- Grey Water

5.8 m³



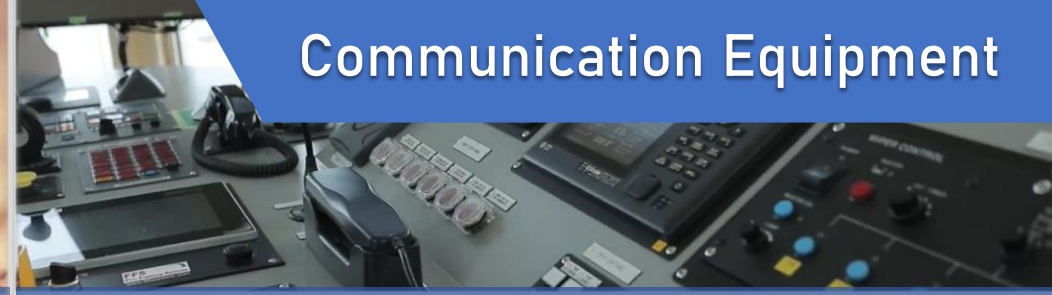


Navigation Aids

- 1 x X-band ARPA radar
- 1 x DGPS
- 1 x Satellite compass
- 1 x Doppler speed log
- 1 x Echo sounder
- 1 x Weather station
- 1 x Inmarsat Mini-C
- 1 x AIS, Class A
- 1 x Autopilot
- 1 x magnetic compass.

CCTV :

- **6 Cameras Covering** : Engine room – thruster room – foredeck , aft deck areas
- 14" Monitor



Communication Equipment

GMDSS : Sea Area A2

- 1 x NAVTEX receiver
- 1 x Float free EPIRB
- 1 x SART radar transponder
- 1 x BNWAS 1x electric driven horn
- 1 x Ship's bell.

External Communications

- 1 x MF/HF Radio Telephone
- 1 x Marine VHF Radio Telephone
- 1 x Handheld VHF.

Internal Communications

- 1 x Loud intercom system at W.H
- 1 x Emergency call system (battery less)
- 1 x intercom system
- Intercom station in each cabin, mess galley, wheelhouse.