

PORT TAWFIK SHIPYARD

A satellite map showing the Port Tawfik Shipyard in Suez, Egypt. The shipyard is a large industrial area with various buildings, roads, and a large body of water. The Suez Canal is visible on the right side of the map. A compass rose is located in the top right corner. The text "PORT TAWFIK SHIPYARD" is overlaid at the top in a large, gold, serif font. Below it, the word "LOCATION:-" is written in a large, white, serif font. A bulleted list follows, also in white serif font, stating that the shipyard is located in Suez city, at a strategic place in the southern entrance of the Suez Canal. At the bottom of the map, there is a small copyright notice: "©2008 Google Earth Image ©2008 Europa Technologies Data ©2008 Teleshed Africa".

LOCATION:-

- Port Tawfik Shipyard is located in Suez city, at a strategic place in the southern entrance of the Suez Canal.

Expansion Areas

□ there are three expansion areas In the Shipyard :-

- Expansion area No1 24600 m²
- Expansion area No2 23750 m²
- Expansion area No2 43750 m²

▣ Workshops Areas :-

- Shipbuilding workshop 1600 m²
- Shipbuilding workshop expansion 1600 m²
- Machines Shop (Turning Division& Milling Division) 3200 m²
- Carpenters Shop (Furniture& Boats) 1350 m²
- G.R.P Workshop 3000 m²
- G.R.P Workshop shapeliness 1600 m²
- Salvage Section 2800 m²
- New salvage section (under construction) 1480 m²
- Piping & Metal works workshop 2000 m²

▣ Statistics :-

- The new location in hood El-Dars was first opened in 1989.
- The overall area is about 51500 m².
- The overall quays are about 1535 m.

The main activities and responsibilities of port tawfik Shipyard

□ Shipbuilding :

- Building different types of vessels up to 20000 DWT (including special purposes vessels, dredgers, tugs, ... etc).

□ General Engineering Works:

- Providing general engineering works for all SCA departments and manufacturing a wide range of spare parts for SCA equipment's and national industries.

□ Salvage works:

- Executing salvage by well equipped and highly qualified divers in addition to inspection and under water welding operations

The main activities and responsibilities of port tawfik Shipyard

□ Repairs of S.C.A Fleet :

- Maintenance and repair of annually more than 60 big & medium sized vessels belonging to S.C.A such as dredgers, floating cranes, tugboats ... etc

□ Foreign Ship Repair :

- Docking ships up to 5000 DWT for repair purposes, and executing floating repairs along repair quays, at anchorage areas and on ways through Canal as well .

SYNCROLIFT 2000 TONS

- a unique and modern technique for ship lifting, which is one of the most advance techniques in ship.
- The Syncrolift is built under the supervision of an American company with the same name Syncrolift.
- All the drawings and designs are approved by the British Supervisory



SYNCROLIFT 2000 TONS

- the Syncrolift can handle vessels up to 200 Tons, and can be increased to handle 3000 Tons in the future .
- The Syncrolift is 70 m long by 20 m wide.





**Syncrolift Winches 16 winches with capacity
244 Tons per each
& it is supported with 5 repairing areas**

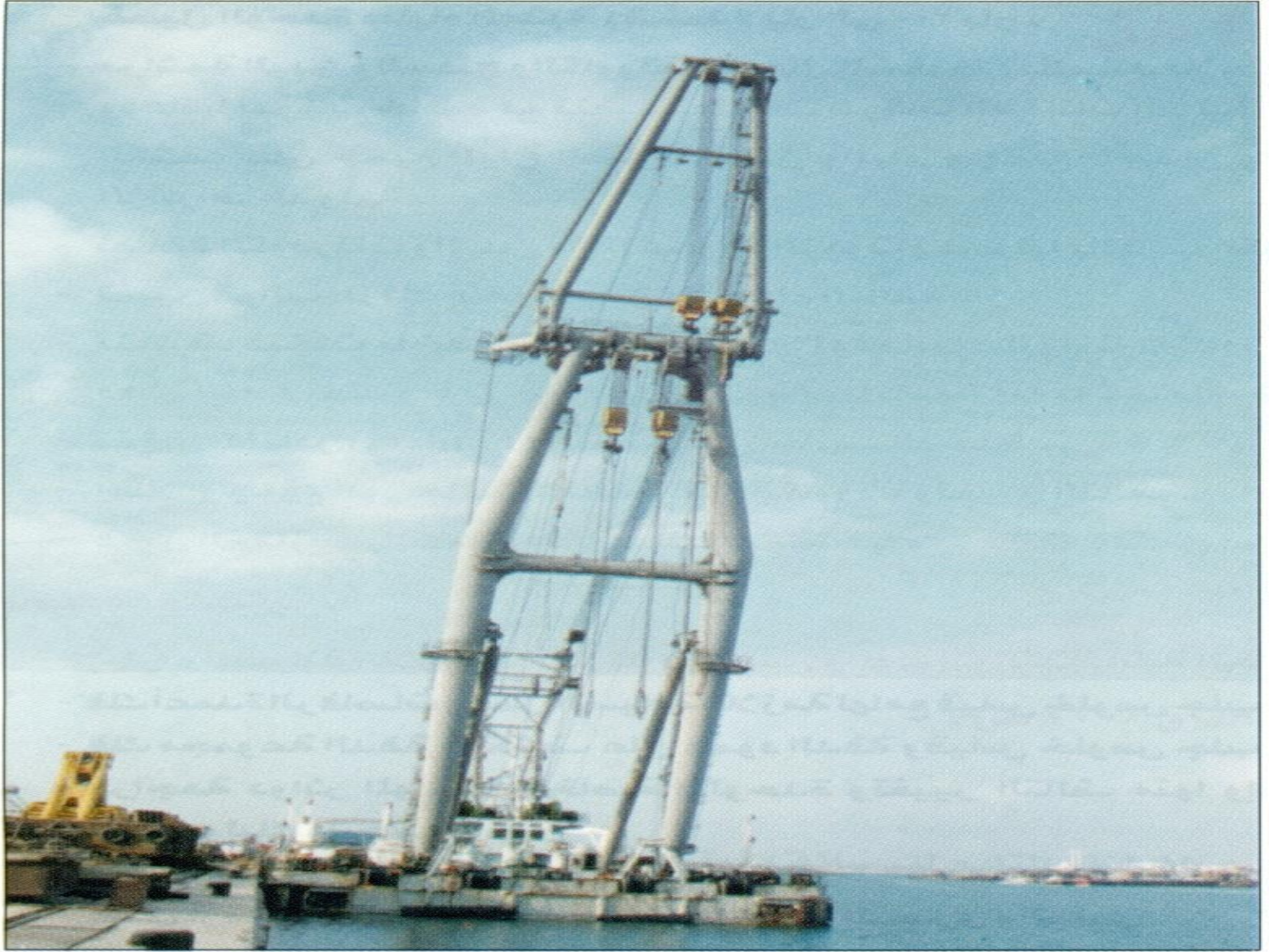
FLOATING CRANES

- Followed porttawfik shipyard 2 floating cranes for serving the southern region in suez canal .

1- Crane ENKAZ1

Main Specifications	Using main jib hooks	Using fly jib hooks
Max. lifting capacity	500 Tons	300Tons
Max. lifting height	35 M	53.5 M
Max. outreach	15 M	30 M

CRANE ENKAZI



2- Crane ZAKI YOUNIS

Main Specifications	Using main jib hooks	Using fly jib hooks
Max. lifting capacity	100 Tons	20 Tons
Max. lifting height	40 M	40 M
Max. outreach	20 M	40 M

2- Crane ZAKI YOUNIS



YARD& MOBILE CRANES

1- Yard Crane of 30 Tons/60 m for serving west Sidewalk of 470 m in Length , this crane can handle up to 30 Tons at 35 meters.



YARD& MOBILE CRANES

Yard Cranes	Rail Way	Scope of application
10 Tons/ 30 m Crane	470 m	Serves the overall quay
10 Tons/ 30 m Crane	100 m	Serves Repair ways No. 4& 5



YARD& MOBILE CRANES

Mobile Cranes

Capacity	No. of Units
50 Tons	1
45 Tons	1
21 Tons	1
12.5 Tons	1
10 Tons	1

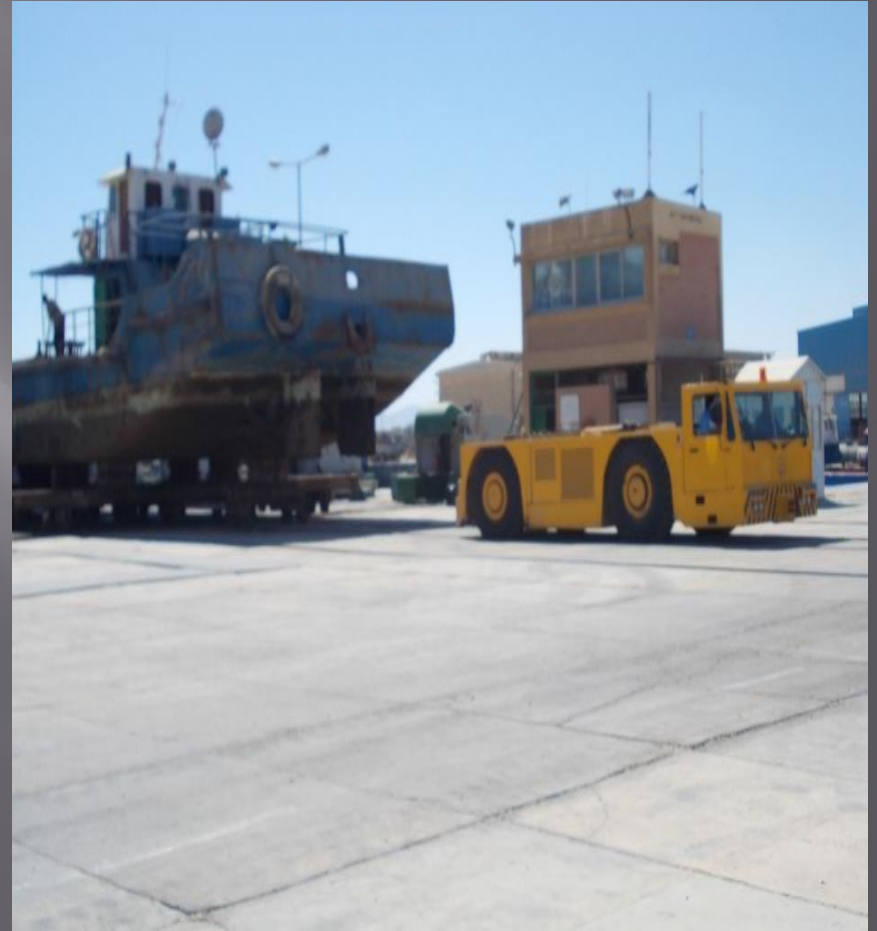
ForkLifts

Capacity	No. of Units
5 Tons	2

YARD & MOBILE CRANES



This besides a power tractor for pulling vessels while while docking and undocking



Drag process of a vessel from Syncrolift

SHIPBUILDING WORKSHOP

The shipbuilding workshop occupies an area of about 2700 m² in addition to another 1600 m² for future expansions.



SHIPBUILDING WORKSHOP

THE WORKSHOP IS EQUIPPED WITH THE FOLLOWING MAIN INSTALLATIONS:

Forming facilities

- Rolling machines to roll steel sheets up to 25 mm thick.
- Straightening M/C for steel sheets up to 30 mm thick.
- Hydraulic presses with tonnage capacities up to 300 Tons
- Guillotine shears for cutting steel sheets up to 16 mm



SHIPBUILDING WORKSHOP



Maintenance operations of vessels

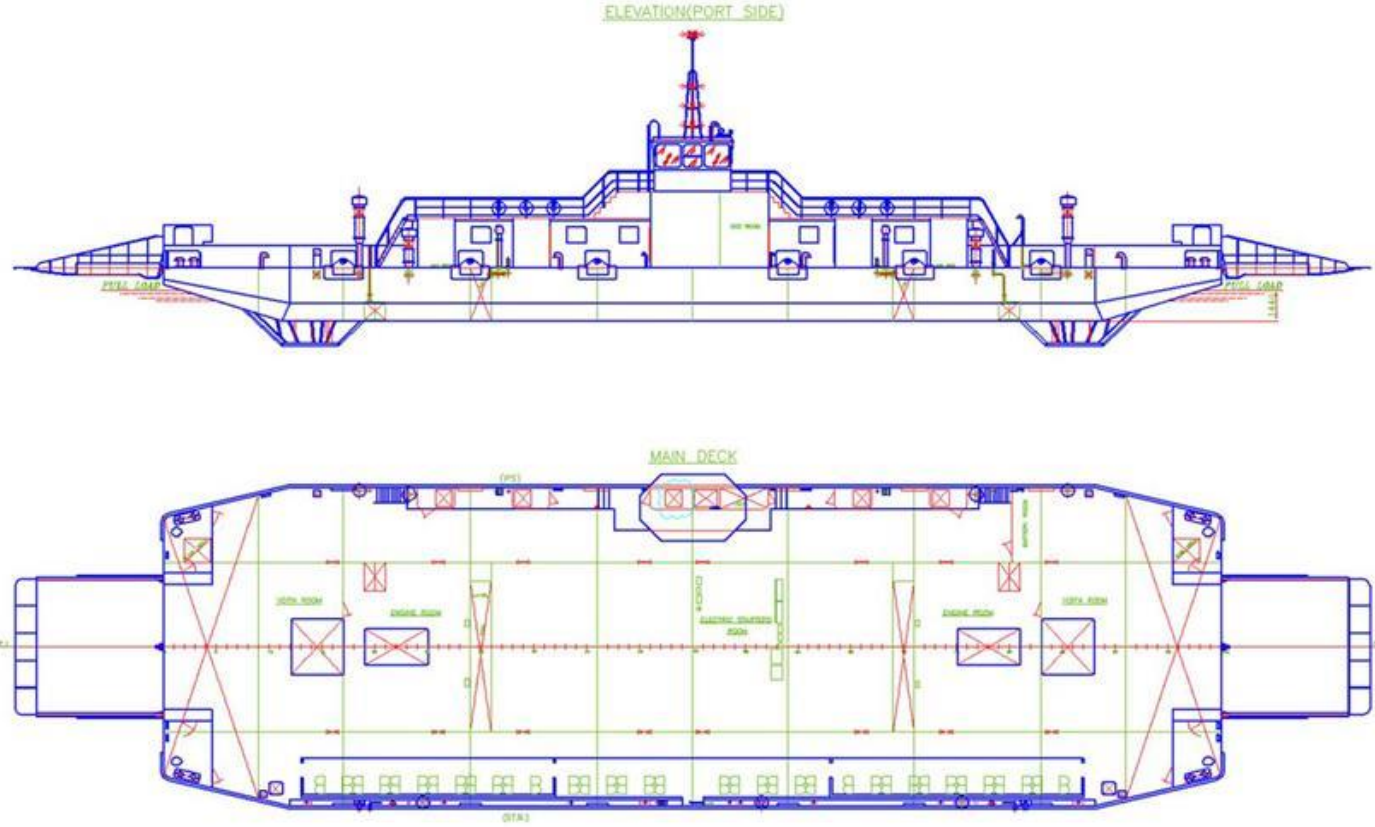


New building of vessels



Construction of the first and largest ferry boat in the Middle East

المعدية سيناء ١ (حمولة ٣٢٠ طن)



عدد ٢ ماكينة قوة ٣٦٠ حصان	***	٦٤,٠٠ متر	الطول الكلى
سرعة المعدية ٦,٥ عقدة فى الساعة	***	١٥,٠٠ متر	العرض الكلى
حمولة المعدية ٣٢٠ طن	***	٢,٥٠ متر	العمق

Ferry Boat Sinai1 (320 Tons)



- ✓ It is considered first Ferry boat built in A.R.E with this volume, and it is constructed for capacity in average 50 cars with various sizes .
- ✓ All the drawings and designs are approved by the British Supervisory (L.R).

SOME VESSELS WAS BUILT & OTHERS IS BEING BUILT BY PORTTAWFIK SHIPYARD

- ferry boat Sinai4 (320Ton) is being built & one ferry boat Sinai1 (320 Tons) was built in November 2013 .
- One Ferry Boat (210 Tons) is being built.
- 8 Ferry Boats (150 Tons) was built.
- 2 Ferry Boats (210 Tons) was developed& built.
- capacity of ferry Boat 895 (45 Tons) was developed to become 70 Tons for dredging department .
- With different sizes(50 Tons, 100 Tons, 200 Tons, 450 Tons) was developed& built for Engineering department.

SOME VESSELS WAS BUILT & OTHERS IS BEING BUILT BY PORTTAWFIK SHIPYARD



MACHINERY WORKSHOP

The Machinery Workshop occupies an area of about 4000 m²

The workshop consists of two main parts:

- Turning Division

- Shaping & Milling Division



MACHINERY WORKSHOP



DIESEL ENGINES WORKSHOP

- Is responsible for performing overhauls for marine diesel engines up to 400 HP & Maintenance of the main emergency generators that ensure the power supply to the shipyard in case of sudden failures in the main power supply

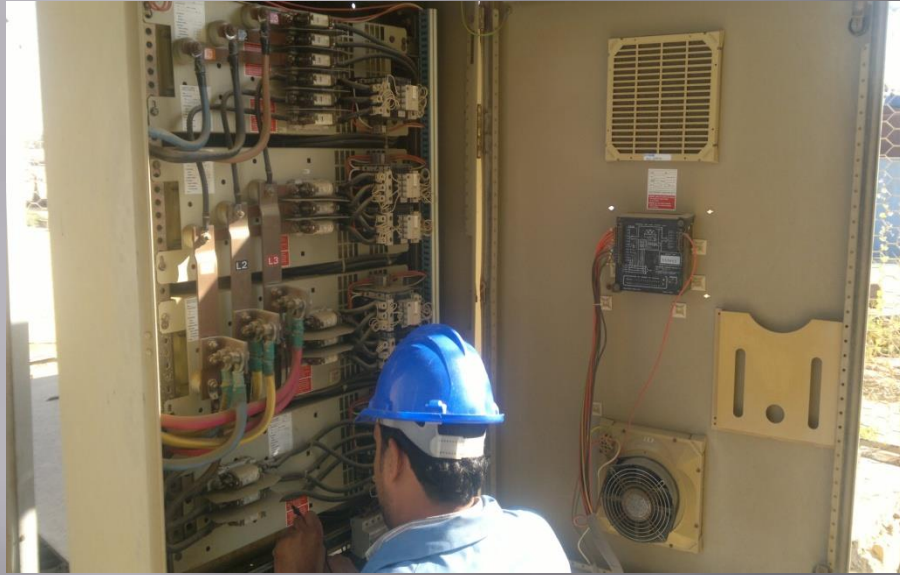
PIPING WORKSHOP

- Is responsible for the repair, forming and installation of all piping systems with different components

ELECTRICITY WORKSHOP

- The Electricity Workshop occupies an area of about 850 m² ,
the workshop can perform the following jobs:-
 - Electric motor rewinding up to 300 hp
 - Electric equipment installation for new building marine vessels (gen sets – pumps – compressors – switch boards)
 - Electric equipment repair for all marine vessels up to 2000 dwt
 - Maintenance for all welding machines.

MAINTENANCE WORKS IN ELECTRICITY WORKSHOP



CARPENTRY WORKSHOP

- The Carpentry Workshop handles all wood works, it is divided into two divisions :

- ❖ Ship's Carpentry division : this division is responsible for all wood works in marine units, including the repair of wooden boats and yachts .

- Furniture Carpentry division : this division is responsible for the production/repair of different types of furniture units, and serves all the departments of the Suez Canal Authority, it handles the manufacturing of furniture in different marine units.

PAINTING WORKSHOP

• The Painting Workshop handles all surface preparation works including :

- ❖ Cleaning ship hulls and interiors using sand blasting and high-pressure water jet.
- ❖ Chemical cleaning for tanks
- ❖ Air and airless spray painting using the finest quality paints

ABOUT GLASS REINFORCED PLASTIC (G.R.P) FACTORY

- G.R.P Factory started its production in port tawfik shipyard since 1981
- G.R.P Factory starts at first serving waterway of Suez Canal requirements from G.R.P launch& boats.
- But since 1985 G.R.P Factory extends its activity to serve all the Maintenance& Construction include Construction of G.R.P launch& boats for third parties.

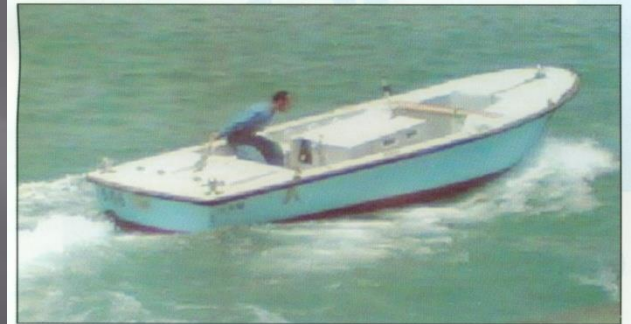
ABOUT GLASS REINFORCED PLASTIC (G.R.P) FACTORY

- G.R.P Factory is a unique feature that distinguishes Port Tawfik Shipyard, the factory that was established in 1981 builds and repairs GRP launch and boats up to 40m long.
- It also produces a wide range of commercial GRP products and is considered one of the best GRP factories in the Middle East.



ABOUT GLASS REINFORCED PLASTIC (G.R.P) FACTORY

- G.R.P Factory is a unique feature that distinguishes Port Tawfik Shipyard.
- the factory that was established in 1981
- builds and repairs GRP launch and boats up to 40m long.
- It also produces a wide range of commercial GRP products and is considered one of the best GRP factories in the Middle East.



ABOUT GLASS REINFORCED PLASTIC (G.R.P) FACTORY

- G.R.P Factory is characterized with a high level of quality of products& services; this is due to the following facts:
- the factory has a highly trained staff, who had a robust and perfect training for different GRP manufacturing techniques in England, Denmark, and USA.
- The factory is equipped with up to date equipments for inspection& quality control .

FORMING& INSTALLATION SECTION

- G.R.P Factory is furnished with :
 - ❖ Fully air conditioned molding area that is 45 m x 9 m
 - ❖ Overhead cranes for material/products handling
- The factory uses the finest and the best quality materials and equipments.
- The factory has its own Piping, Electrical, Mechanical, and Carpentry workshops

Forming& installation section



قسم التركيبات



قسم التركيبات (مرحلة تجميع المنتجات)



G.R.P FACTORY

- G.R.P Factory had successfully executed great contracts for different esteemed external customers, including :
 - ❖ Ministry of Health and Population
 - ❖ Ministry of Interior (police)
 - ❖ Ministry of Environment Affairs
 - ❖ Red Sea Ports Authority
 - ❖ Misr for tourism Co.
 - ❖ Sheraton Hotels, Hurghada
 - ❖ Canal Mooring& Lights Company (An affiliated company for the SCA)
- The factory also ensures the supply of GRP launches for the Transit department of the SCA.

FLYING PILOT BOAT 17.55 M

□ Basic Dimensions :-

□ Length : 17.55 m

□ Width : 3.98 m

□ Draft : 1 m

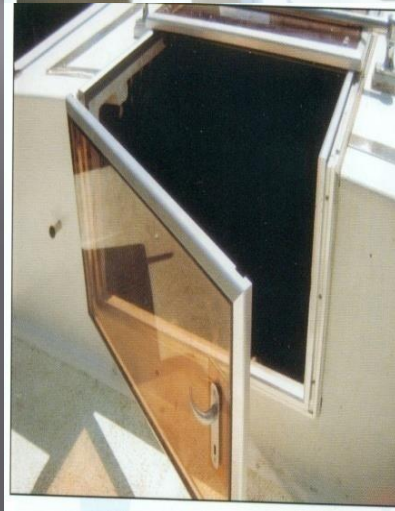
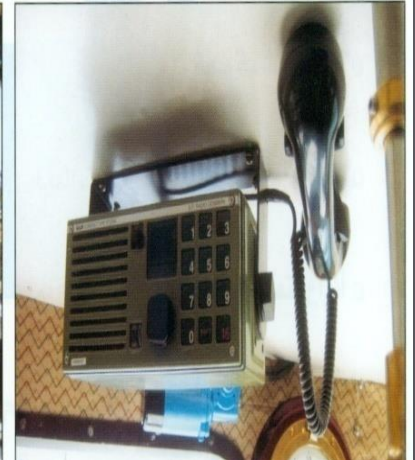
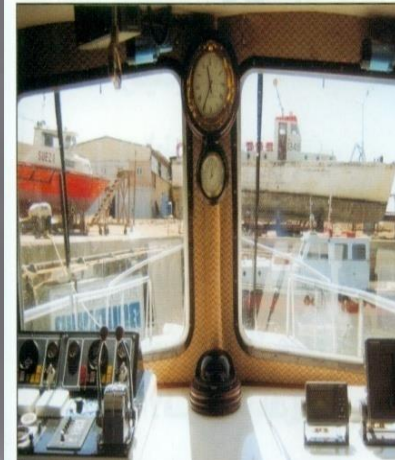
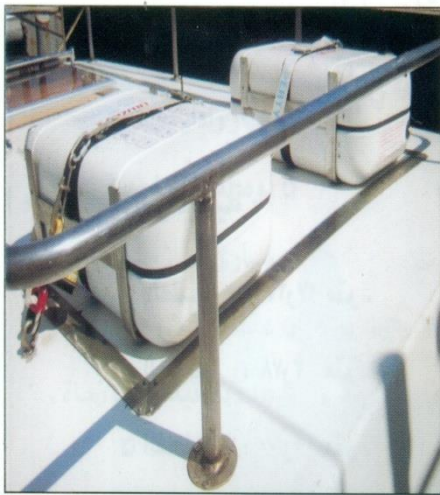
□ Speed : 21 knots

□ Individuals : 4 Individuals

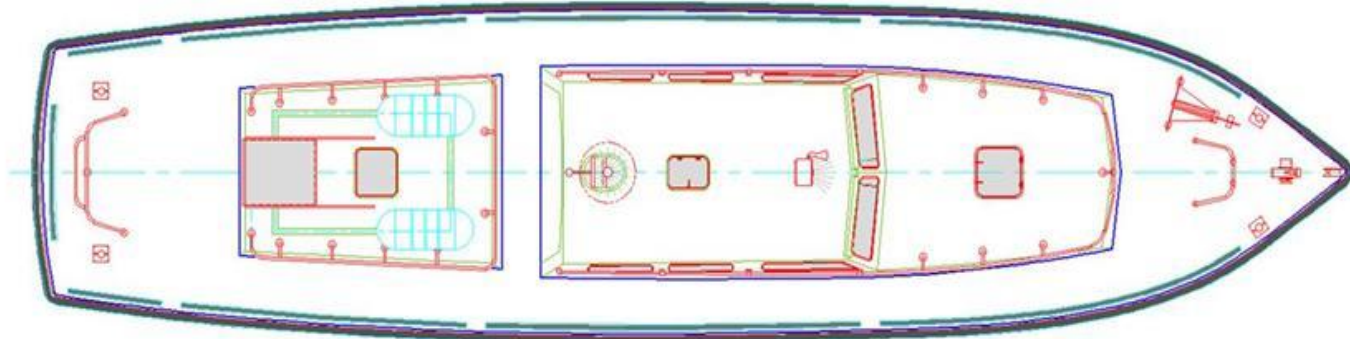
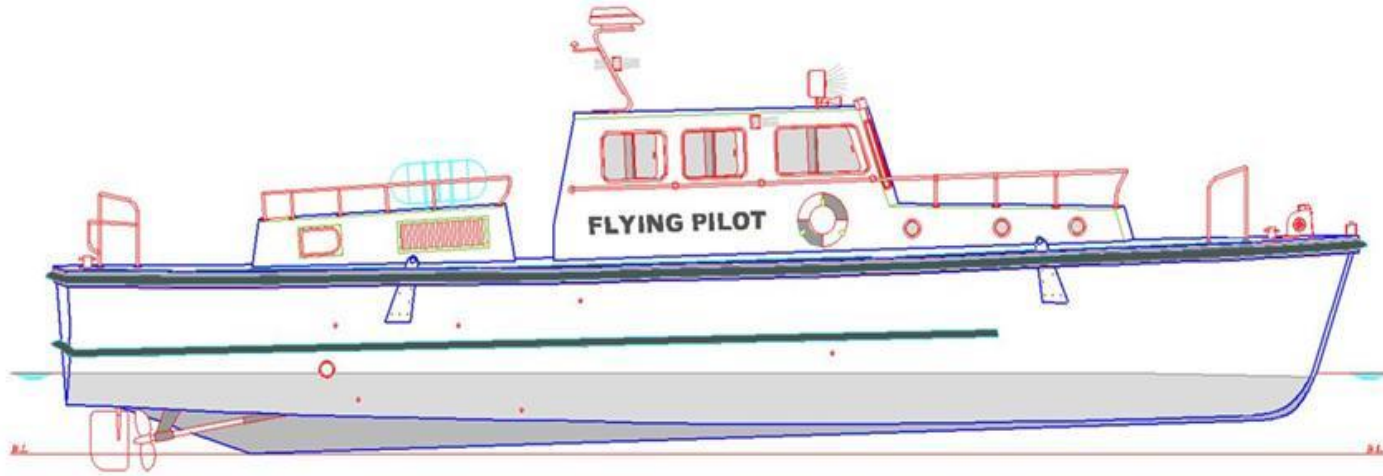
launch staff + 8 individuals leaving room & Cabine



THE LAUNCH IS EQUIPPED WITH THE FOLLOWING INSTALLATIONS:

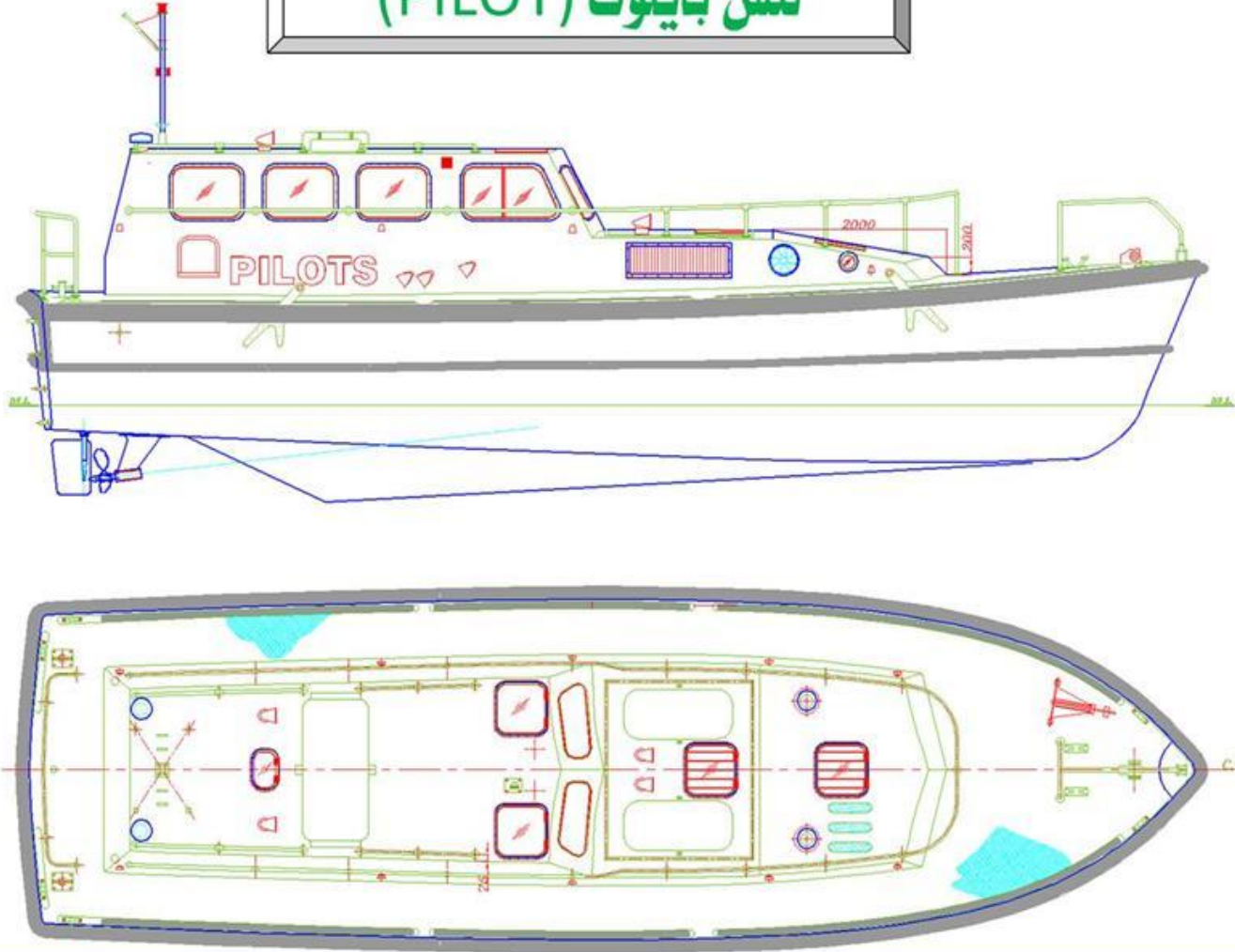


لنش بلبل معدل (FLYING PILOT)



عدد ٢ ماكينة قوة ٤٥٠ حصان	***	١٧,٦٢ متر	الطول الكلى
سرعة اللنش ٢٢ عقدة فى الساعة	***	٤,٢٠ متر	العرض الكلى
حمولة اللنش ٦ افراد بالطاقم	***	١,٩٨ متر	العمق

لنش بايلوت (PILOT)



الطول الكلى	١٣,٧٠ متر	***	عدد ٢ ماكينة قوة ٤٥٠ حصان
العرض الكلى	٤,١٠ متر	***	سرعة اللنش ٢٢ عقدة فى الساعة
العمق	١,٧٠ متر	***	حمولة اللنش ٨ افراد بالطاقم

PILOT BOAT 13.74 M

□ Basic Dimensions :-

□ Length : 13.74 m

□ Width : 4.10 m

□ Draft : 1.18 m

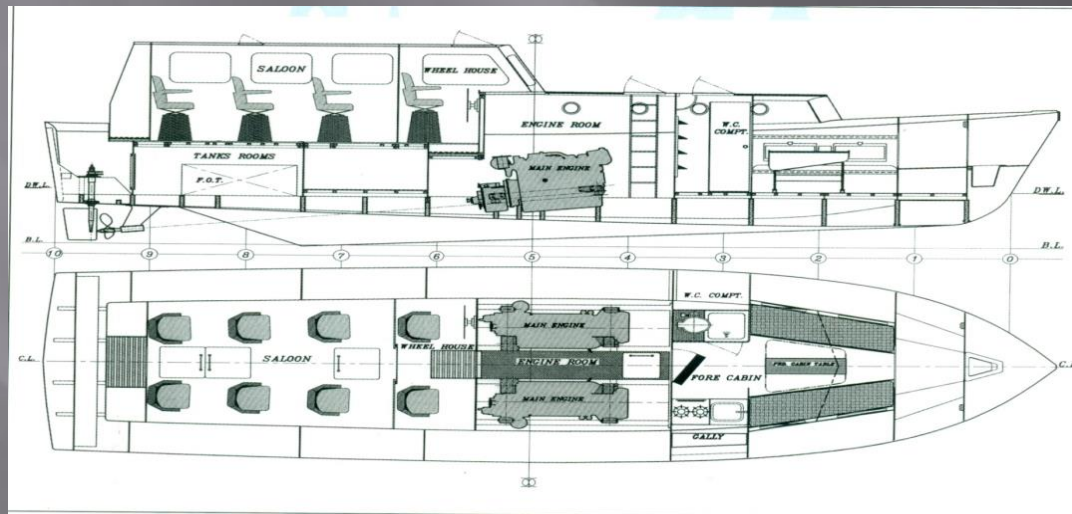
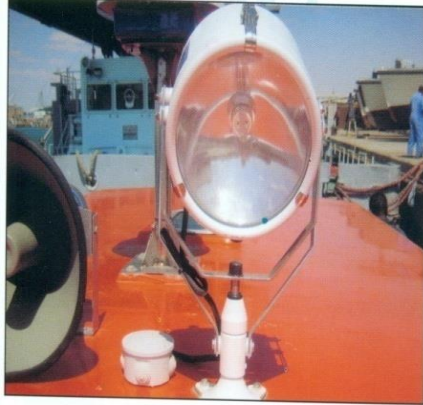
□ Speed : 20 knots

□ Individuals : 3 Individuals

launch staff + 6 individuals leaving room & Cabine



THE LAUNCH IS EQUIPPED WITH THE FOLLOWING INSTALLATIONS:



لنش مرور سريع 9,5 متر

❑ Basic Dimensions :-

❑ Length : 9.5 m

❑ Width : 3.2 m

❑ Draft : 0.55 m

❑ Launch is equipped with Engine

300 Hp at 1800 cycles/min

and Outboard Engine 36 Hp

❑ Speed : 27 knots



USAGE OF WIND IN ELECTRICITY GENERATION

□ In collaboration with the Danish MAT company

72 feather for Turbines were
manufactured for generating electricity

from wind energy 100 K.Watt to New

And Renewable Energy Authority

• and those turbines work at hurghada

• With high efficiency till now



« مراوح تربية قدرة ١٠٠ ك وات »

G.R.P FACTORY PRODUCTS

