



# Port Said Shipyard

Owned by Suez Canal Authority





## About us

The essence of the past and the promise of the future converge at Port Said Shipyard (PSS), PSS considered one of the leading shipyards in the middle east it has a unique strategic and distinguishing location at the northern tip of Suez Canal, established since the inauguration of SCA so It has acquired long standing experience in ship repair with various docking capacities, alongside its cutting-edge new building capabilities.

Port Said shipyard extends over an area of 437000 m<sup>2</sup> with ship repair quay up to 1200 m in length, up to 13 m in draft equipped with yard cranes up to 60 tons SWL as well as floating cranes with capacities up to 500 tons SWL.



**4 floating docks  
up to 35000 TLC**



**More than 60 cranes up to 60 ton SWL  
(jetty – dock- overhead cranes)**



**5 floating cranes up  
to 500 tons SWL**

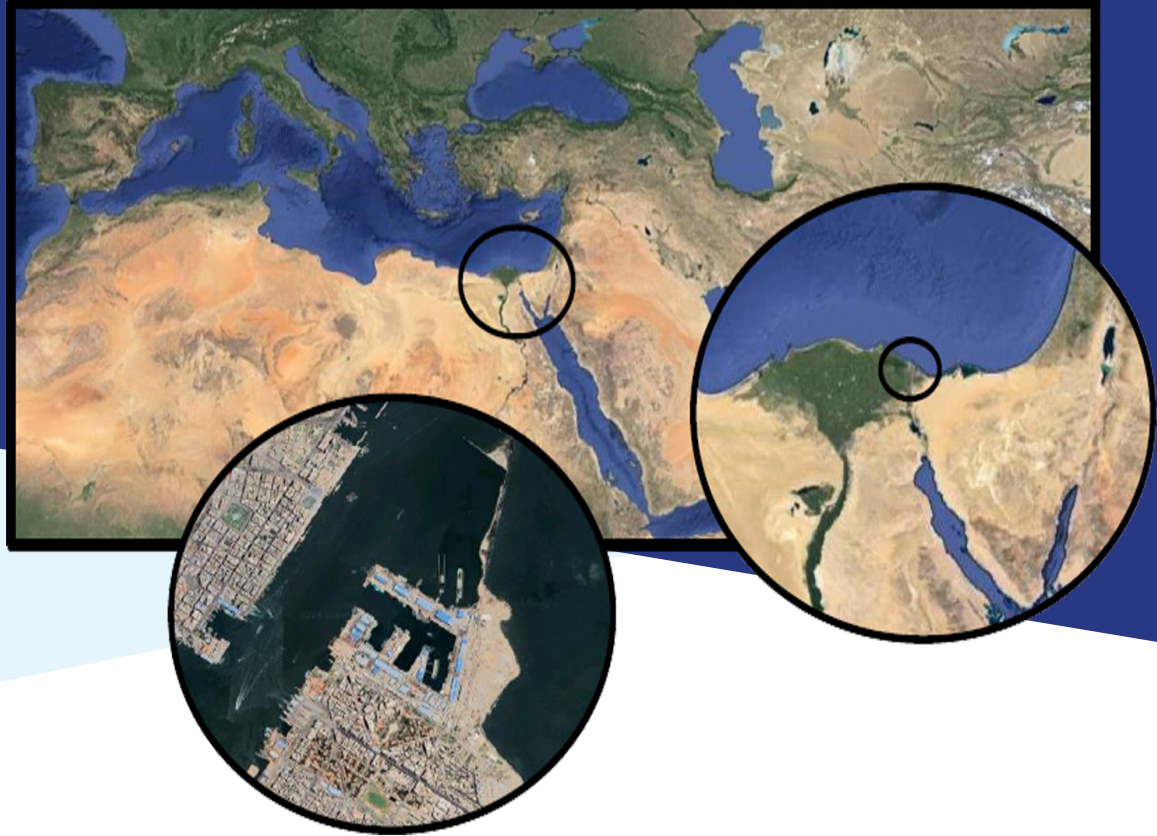


**Yard area  
437000 m<sup>2</sup>**



**ship repair quay 1200 m in length, up to 13m in draft**





# Customer Satisfaction

## Our True Investment

At Port Said Shipyard PSS, we don't just build vessels; we forge lasting relationships. Our commitment to customer satisfaction is the cornerstone of our success. Here, every project sets sail with a promise: excellence, reliability, and unwavering dedication.

Your vision is our compass. We listen, adapt, and steer toward success. Your satisfaction isn't just a goal; it's our North Star.

We believe in clear horizons. From project inception to delivery, we keep you informed. No hidden currents, no surprises—just transparent navigation.

At Port Said Shipyard, we don't measure success in tons of steel or gallons of paint. We measure it in smiles—the satisfaction etched on our clients' faces as they embark on their maritime journeys.

# Our P.O.D.

At the northern tip of Suez Canal which handle 12% of the global trade, overlooking Mediterranean and red sea, The meeting point of the continents of the ancient world: Africa, Asia and Europe. Our points of difference are:



## Strategic Position

Located at the northern tip of the Suez Canal, our shipyard has unmatched access to global maritime routes.



## Experience

With a long history in ship repair, we bring expertise and assurance to all projects.



## Facilities and Capacities

Our facilities can accommodate vessels up to 35,000 TLC.



## State-of-the-Art Infrastructure

In addition to ship repair services, we offer cutting-edge new building capabilities



## Workshops and Cranes

Our shipyard extends over 437000 m<sup>2</sup> area with 1200 m long ship repair quay. Equipped with yard cranes that can handle up to 60 tons SWL, as well as floating cranes with capacities up to 500 tons SWL, we ensure efficient and effective operations.





# QHSE

## Unwavering Commitment

At Port Said Shipyard PSS, we are steadfast in our dedication to upholding the highest standards of Quality, Health, Safety, and Environmental (QHSE) practices. Our commitment is driven by a fundamental belief that excellence in QHSE is essential to our success and sustainability.

Our quality management system is certified under ISO 9001:2015, which ensures that our operations meet international standards for quality management practices and reflects our dedication to providing high-quality services and continuous improvement.

Also, we received certification for Occupational Health and Safety Management System (ISO 45001:2018). This demonstrates our focus on creating a safe working environment and our proactive approach to preventing accidents and ill health.

# Docking Facilities

## Floating Dock "FAKHR AL QANAH"

Carrying Capacity	35,000 TLC
Length Over All	260 m
Length Over Pontoon	250 m
Clear Width between fenders	50 m
Max. Draught over keel block	10 m
Dock Crane Capacity	2×40 T SWL
Class	B.V

## Floating Dock "EID EL NASR"

Carrying Capacity	25,000 TLC
Length Over All	230 m
Length Over Pontoon	210 m
Clear Width between fenders	35 m
Max. Draught over keel block	9.7 m
Dock Crane Capacity	2×15 T SWL

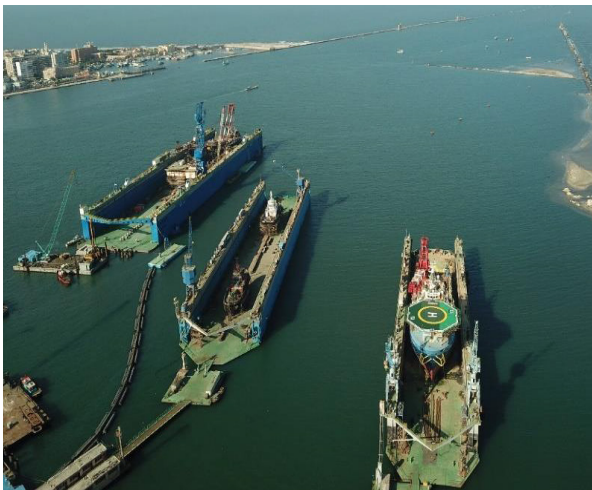
## Floating Dock "EL SALAM"

Carrying Capacity	10,000 TLC
Length Over All	185 m
Length Over Pontoon	169.4 m
Clear Width between fenders	28 m
Max. Draught over keel block	8.5 m
Dock Crane Capacity	2×10 T SWL

## Floating Dock "PORT SAID"

Carrying Capacity	5,000 TLC
Length Over All	120 m
Length Over Pontoon	106.4 m
Clear Width between fenders	21.5 m
Max. Draught over keel block	6 m
Dock Crane Capacity	2×6 T SWL
Class	L.R.







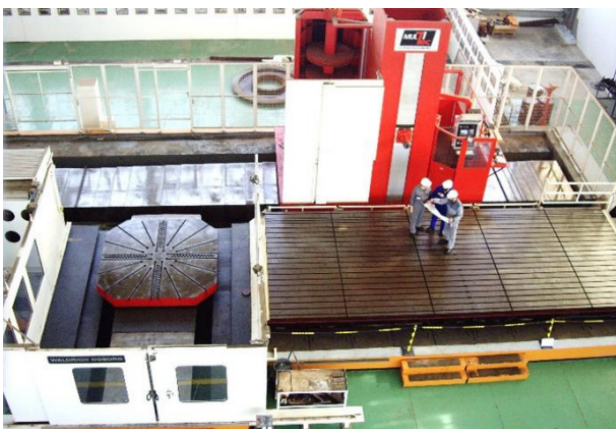
# Machining Workshops

The machining workshops serve as the pivotal element of the Shipyard, providing a comprehensive solution for all maintenance needs, inclusive of the fabrication of spare parts with exceptional precision.

## CNC Machining Workshops



- SAFOP CNC horizontal turning machines that can handle work piece up to 25 tons, diameter up to 1700 mm, and distance between centers up to 15.5m.
- Vertical turning machine with maximum turning diameter up to 5m.



- WALDRICH COBURG ,5-axis milling machine with work table dimension up to 10m x 4m and work piece weight up to 40 ton, and rotary table with indexing capacity up to 3 m dia. 30 tons in weight.



- DMG MORI 5-axis milling machines



- SPINNER CNC turning machine with bar feeder.



- IBARMIA ZVH 55, 5- AXIS Milling Machine



- The new horizontal milling and boring CNC machine: (Upcoming Facility)

## Conventional machines





# Foundry

Our facility is a hub of metallurgical excellence, crafting components from copper alloy and grey cast iron, as well as zinc blocks and special alloys like babbitt bearing alloys.



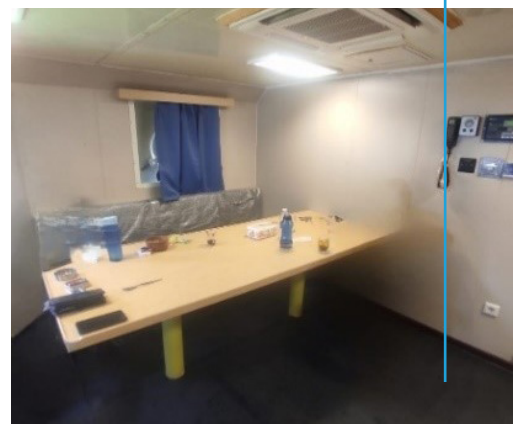
## Forging workshop

Manufacturing forged steel works, equipped with furnaces and forging hammers Up to 3 tons hammering force.

## Carpentry workshops

**Carpentry workshops are responsible for the following specialized tasks:**

- Interior works and Furniture fabrication.
- Marine Vessels Accommodation lining including Insulation lining.
- Vessels Deck wood works.







## Rolling machines

With capacities up to 45 mm thickness and internal diameters ranging from 55 cm to 3 m with 4 m maximum length of the pipe.

## Pipe welding machine

Using a linear and perimetric welding machine for the pipes on the inner and outer sides with diameters starting from 60 cm and up to 2 meters with the length of 6 meters for the pipe and maximum thickness of 65 mm.



## Plasma Cutting Machine

### ESAB Plasma CNC Cutting Machine specs:

- Submerged table 28×9m.
- Cutting steel sheets with up to 12m × 2.5m.
- Cutting steel sheets using plasma, up to 50 mm thickness.
- Cutting steel sheets using Oxyacetylene up to 200 mm thickness.



## Forming Machines

- Vertical Hydraulic Portal Press capacity up to 700 ton.
- Vertical Hydraulic Single Column Press capacity up to 500 ton.
- Frame Bending Machine 400 ton.

**The machine carries out the automatic marking on sheets.**





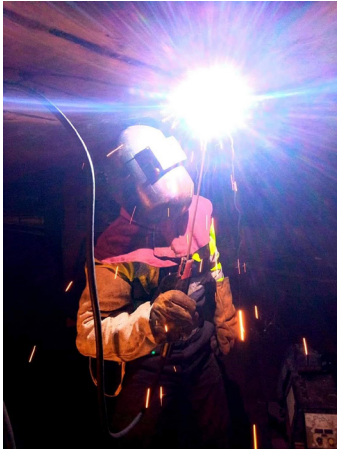
# Steel Repair Workshop

From minor repairs to major overhauls, our team can handle all types of structural repairs, with full compliance to IACS rules and regulations. Our certified welders are proficient in various welding techniques, ensuring strong and reliable repairs and modifications.

Our state-of-the-art Non-Destructive Testing (NDT) services such as (PAUT, UT, RT, MT, PT and VT) are at the forefront of ensuring the integrity and safety of vessels.



# Fast-Track Steel Renewal, Inspection, and painting work



We understand the urgency of getting your vessel back to work. That's why we specialize in fast-track steel renewal for cargo holds, ensuring your ship is ready to sail with minimal downtime. **Our Process:**

**Assessment:** We begin with a thorough assessment of your cargo holds to identify areas in need of renewal in conjunction with class surveyors.

**Planning:** Utilizing the latest methods and technologies, we plan the most efficient approach to renew your steelwork.

**Execution:** Our skilled workers carry out the steel renewal quickly and effectively.

**Quality Control:** Throughout the process, we conduct rigorous quality control checks and NDT to ensure the integrity of our work.

**Paintings:** All painting works are performed in conjunction with the delivered steel repairs to get your ship back in business as swiftly as possible.

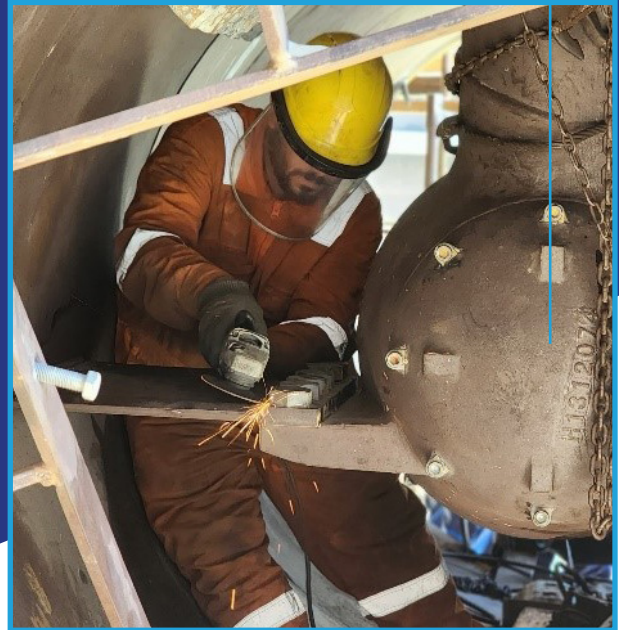
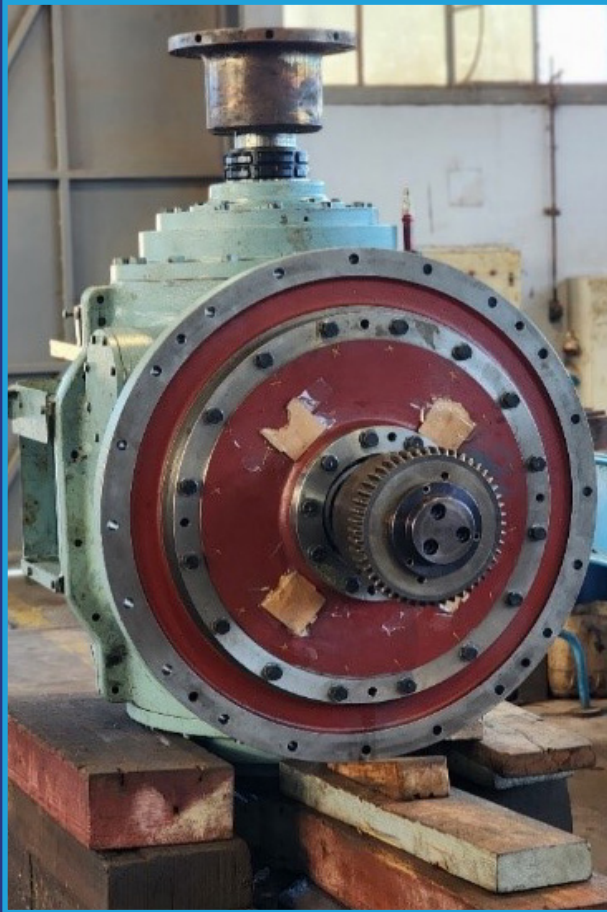
## Cargo Holds' Works







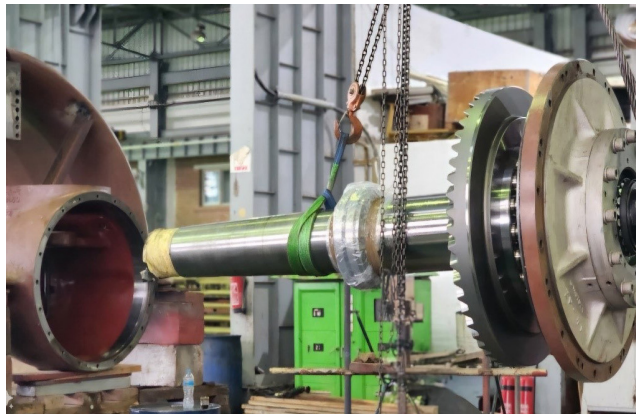
# **Mechanical and piping workshops**



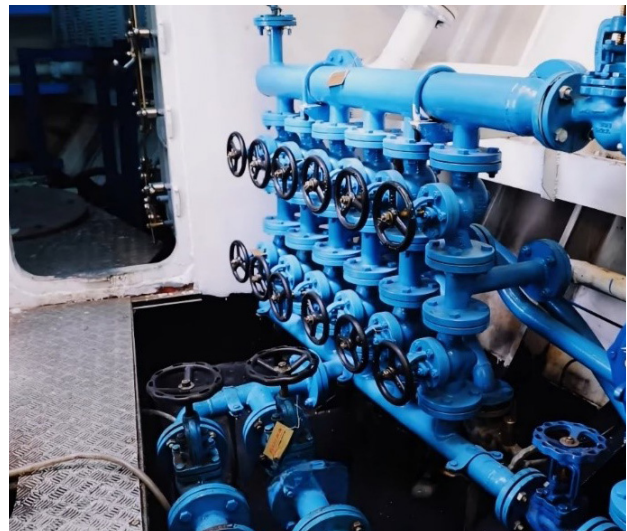
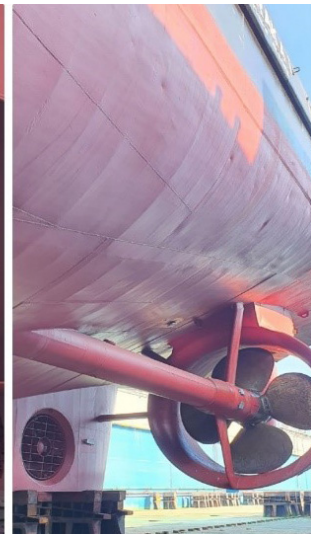
Our specialized mechanical repair services include:

- Mechanical onboard works: including repair in situ, dismantling, maneuvering, lifting, maintenance, reinstallation, alignment, and adjustment for all the various mechanical and electric components.
- Mechanical workshops: Maintenance and overhauling of valves, pumps, propellers (vertical – Z DRIVE – CPP – FPP ...etc.) and other different mechanical units.
- Line boring and shaft alignment using the state-of-the-art laser devices for shafts' diameters up to 700 mm and a space between centers up to 20 meters.
- Manufacturing, disassembly, installation, and testing pipelines up to 14 inches, hydraulic pipes from 7 mm to 75 mm up to 400 bars.
- Pickling, galvanizing, and flushing for fuel oil, lube. Oil, and hydraulic pipelines.
- Main and Aux engine works, Hydraulic works, Heat exchangers ultrasonic cleaning and testing.
- All rubber works such as rubber and CNAF gaskets making.
- Mechanical vibration measurements and analysis, dynamic balancing, hardness test for hard and soft materials and air and fluid flow rate measurement.









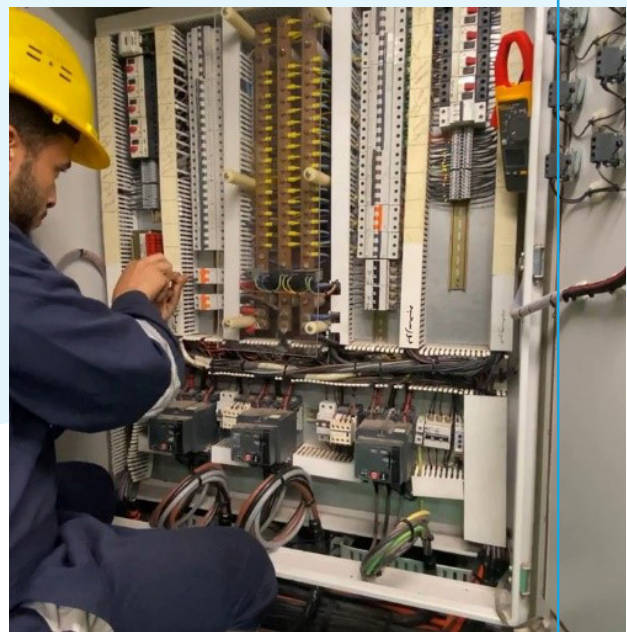
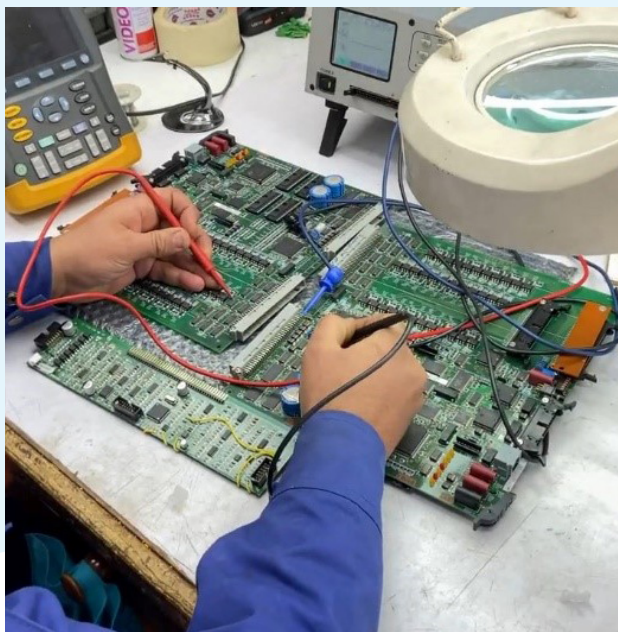


# Electrical workshop

- Enhancing the insulation of electric motors, generators and transformers through overhaul maintenance techniques.
- Electric motors rewinding up to 400 KW.  
Electric generators rewinding up to 400 KVA.
- Generators load testing up to 1.5 MW.
- Upgrading control systems for generators, propellers, main engines, AMS for any vessel according to classification societies rules.
- Circuit Breakers maintenance works.
- PCB repair services.
- Electroplating workshop.









# Blasting & Painting Workshop

## Quality You Can Trust

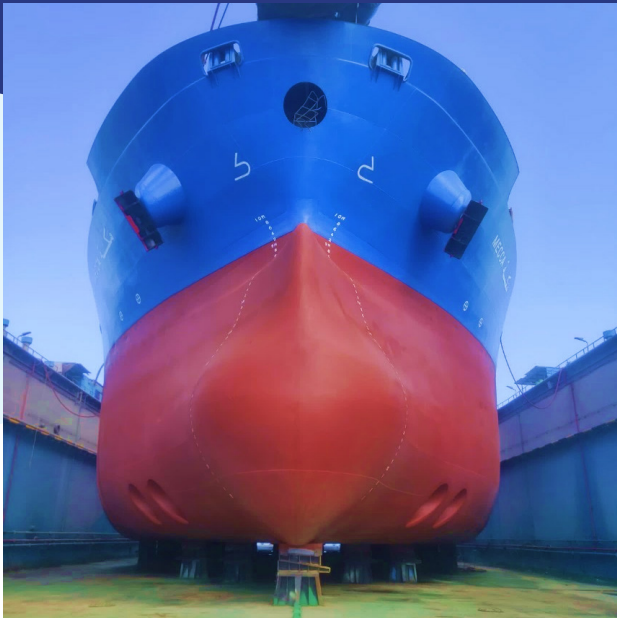
Our workshop is designed to deliver the highest quality of work at an impressive rate, ensuring your vessels maintain their integrity and aesthetics.

At Port Said Shipyard, we understand the importance of time. That's why our workshop is designed for maximum efficiency. Our streamlined processes, combined with our skilled workforce, allow us to complete projects at a rapid pace without compromising on quality.

Our commitment to quality and efficiency is what sets us apart. We strive to provide our clients with superior service at every stage of the process. From initial consultation to final delivery, our team is dedicated to ensuring your satisfaction. Our advanced equipment allows us to perform blasting and painting simultaneously, significantly reducing the turnaround time.









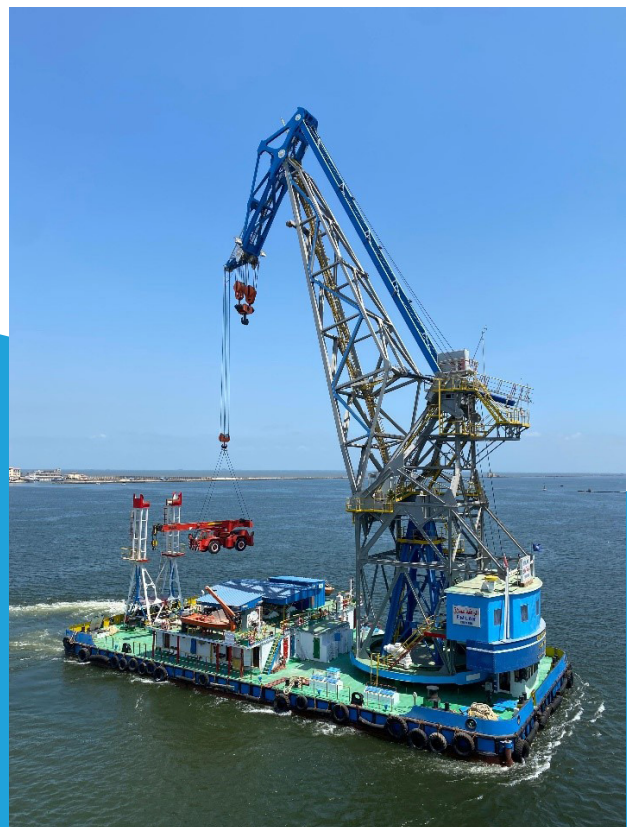
# Floating Cranes

## Enkaz

Max. lifting capacity	500 tons
Max. hook height	60 m.
Max. Outreach	40 m.
Length over all	61 m
Breadth	30 m
Max. draught	3.85 m

## Bahgat Badawy

Max. lifting capacity	100 tons
Max. hook height	40 m.
Max. Outreach	28 m.
Length over all	44.8 m
Breadth	20.5 m
Max. draught	2.2 m







## Emlak

Max. lifting capacity	200 tons
Max. hook height	35 m.
Max. Outreach	28.8 m.
Length over all	44.8 m
Breadth	20.5 m
Max. draught	2.8 m

## Khalifa

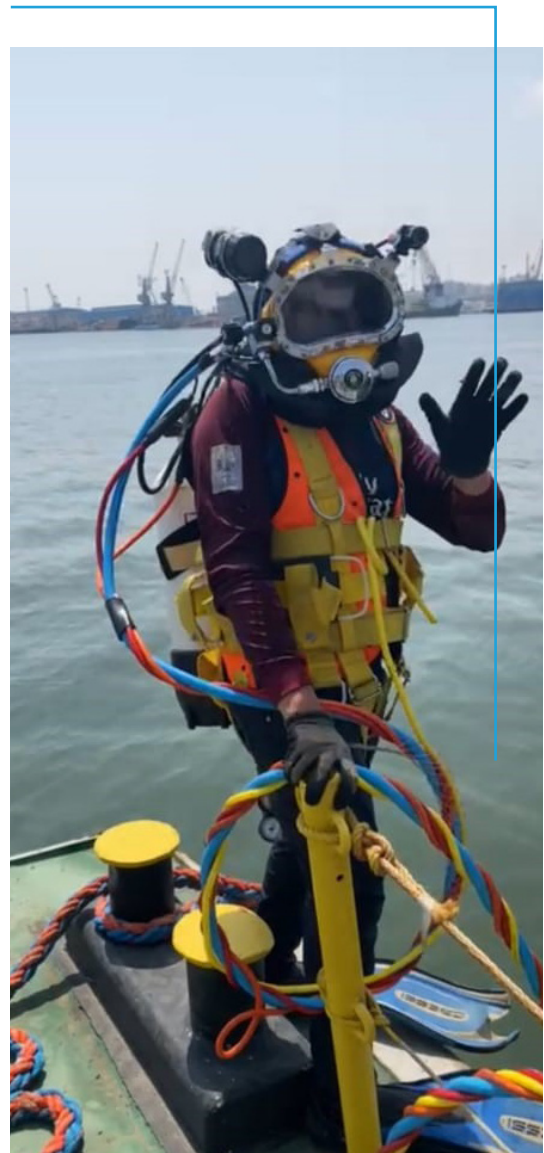
Max. lifting capacity	40 tons
Max. hook height	25 m.
Max. Outreach	23 m.
Length over all	30 m
Breadth	15 m
Max. draught	1.6 m

# Maritime Salvage and under water work



- Our in-house salvage team is equipped with state-of-the-art support and rapid salvage equipment (fast intervention boats, floating cranes, surface supply systems, submersible pumps, fouling equipment, welding machineries and decompression chamber.
- Since its establishment till now, the section has been providing various services in addition to its main role in securing the navigation traffic in the Suez Canal:

1. Underwater survey
2. Underwater repairs
3. Underwater cutting and welding
4. Piers and Jetties maintenance
5. Thickness's gauge measurements
6. Cable laying and Siphon maintenance.
7. In Water Survey in lieu of dry dock
8. U/W closed circuit T.V (C.C.T.V)
9. blank off sea inlets and overboard discharges.
10. Propeller & Rudder Clearance measurements.
11. Propeller, sea chest cleaning.
12. Salvage and wreck removal.
13. Under water Photographing.
14. Ship damage control.
15. IMCA certified divers.





# New Building Capabilities

1. Slipway with a capacity of 20,000 tons for shipbuilding, equipped with 4-yard cranes with capacities ranging from 40 – 60 tons.
2. Five floating cranes of capacities ranging from 25 – 500 tons.
3. 1775 m. of quays with a draft of up to 9 m. equipped with service cranes with lifting capacities up to 60 tons.
4. 2 bays (100×25 m) with overhead cranes up to 20 tons SWL.



## Design section

Our design department employs cutting-edge marine design software, specifically AVEVA Marine. Our team of highly qualified engineers specializes in marine vessel design, adhering to the rigorous standards set by classification societies. We offer comprehensive services, including class-approved detailed design and expertise in areas such as basic design, construction, workshop planning, mechanical systems, piping, and electrical components.



# Some of our Products

## Baraka series

**Bollard pull rated :**160 tons

**Speed:** 17.5 knot.

**Length:** 69.2 m, **Beam :**15.5 m

**Depth:** 7.4 m and **Draught:** 6.4 m

**Total dead weight capacity:** 2320 tons

**Four diesel engines:** each 3990 HP at 600 rpm

**Marine range:** 6000 nautical miles



## Mosaheb series

**Bollard pull rated :**70 tons

**Speed:** 13 knots

**Length:** 35.87 m, **Beam :**12.5 m, **Draught:** 5.75 m

**Diesel engines:** 2 × 2460 HP

**Propeller:** VSP 32R5/265-2



## RASTER 3200 series

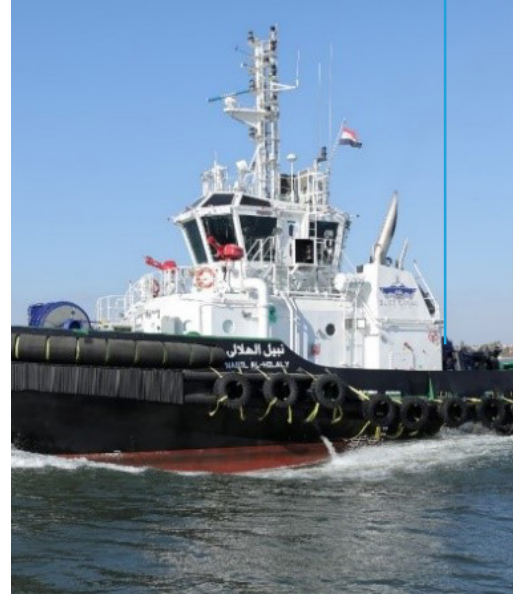
**Bollard pull rated :**75tons

**Speed:** 13 knots

**Length:** 32 m, **Beam :**12.8 m, **and Draught:** 6 m

**Diesel engines:** 2 × 2958 HP

**Propeller:** ASD



## 210-tons car ferry series

**Carrying capacity :** 210tons

**Speed:** 7 knots

**Length:** 57 m, **Beam :**15 m  
**and Draught:** 1.4 m

**Diesel Engines:** 2 × 400 HP

**Propeller:** V.S.P

## 320-tons car ferry series

**Carrying capacity :**320tons

**Speed:** 8 knots

**Length:** 64 m, **Beam :**15 m  
**and Draught:** 1.5 m

**Diesel engines:** 2 × 400 HP

**Propeller:** ASD

# Our in-house logistics

## Fire station



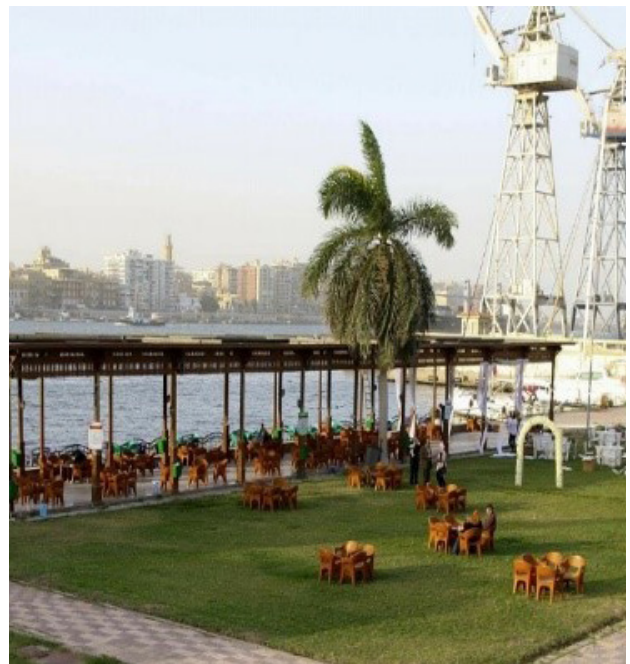
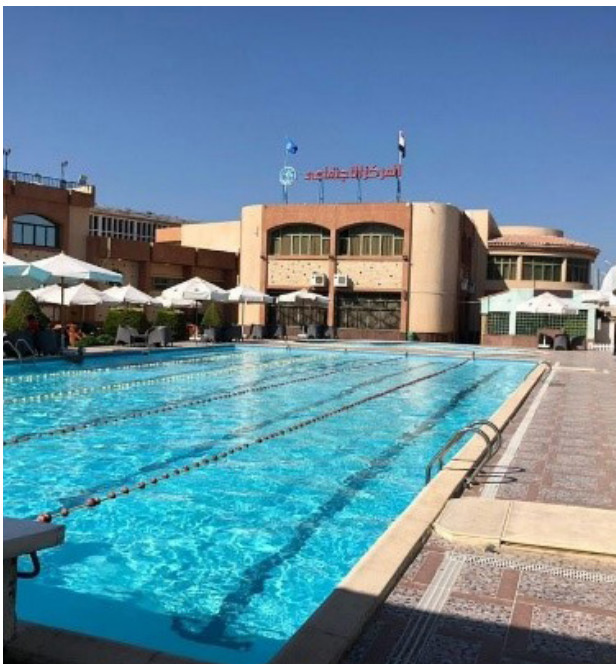
## Medical center





# Social Clubs

We warmly invite you to savor your preferred coffee along the banks of the Suez Canal, basking in the warmth of the Egyptian sun, the freshness of the air, and the clarity of the seas. You are always welcome.







**ABS**

Certificate Number: 21-4900399-A  
 Issuance Date: 19 August 2023  
 Expiry Date: 18 August 2024  
 ABS Port Office: Alexandria, Egypt  
 Company's Website: www.ascontrol.gov.eg

**CERTIFICATE OF  
Recognized Service Supplier**

This is to certify that

**PORT SAID SHIPYARD**  
 located at  
**PORT FOAD, PORT SAID, EGYPT**

having been audited by ABS and having given a satisfactory practical demonstration of the service listed below, is recognized by ABS as a Service Supplier to provide services which ABS Supervisors may rely on to make decisions affecting classification or statutory surveys.

**Hull Gauging**

Attached Certificate Appendix provides specific scope of approval, authorized personnel, manufacturer authorizations, and recommendations.

It is the responsibility of the Service Supplier to employ, train and quality persons in the service provided. If the service requires approval from manufacturer, the Service Supplier is responsible to maintain contact with the manufacturer and maintain any service manuals up to date. Where required by the category of service, the Service Supplier shall provide solid evidence that it is authorized or licensed by the equipment manufacturer to service the make and model of equipment for which approval is sought. If approval from the manufacturer is not obtained, a surveyor must be present at time of survey to continue work. Alternatively, current written instructions from the manufacturer are to be obtained to continue work without the surveyor present. Service Suppliers must present photo identification, evidence of qualifications and authorizations from manufacturers, as applicable, at the time of service.

The ABS office issuing this certificate is to be kept updated with changes to the management of the company, employees, equipment and models on the authorization list and any changes made.

*[Signature]*  
 Samah Mousa, Surveyor

CLS-SPM-000-IC Rev-25 Page 1 of 3

**CERTIFICATE**

**TÜV AUSTRIA**

**Management System as per  
EN ISO 9001 : 2015**

In accordance with TÜV AUSTRIA procedures, it is hereby certified that

**PORT SAID SHIPYARD (SUBSIDIARY OF SUEZ CANAL AUTHORITY)  
 Gawad Hoseny St. Port Fouad, Port Said  
 42523, PORT FOUD, EGYPT**

Applies a Quality Management System in line with the above Standard for the following Scope

**SHIP REPAIR SERVICES.**

Certificate Registration No: 20001210000237 Valid until: 2026-08-31  
 Initial certification: 2017-08-30

*[Signature]*  
 Head of Management Systems & Product Certification Division

Certification Body  
 at TÜV AUSTRIA

Address: 2003-09-30

This certification has been conducted in accordance with TÜV AUSTRIA auditing and certification procedures and is subject to regular surveillance audits.

TÜV AUSTRIA HELLAS  
 105, Mousiorgos Ave.  
 GR-15242 PIREUS, GREECE  
 www.tuev.at/hellas  
 0030 210 18400-100

**TAP** **QSD**

Collected by: *[Signature]*

**RINA**

CERTIFICATE OF APPROVAL  
 OF SERVICE SUPPLIER

CERTIFICATE NO. 85100323XK

This is to certify that

**SUEZ CANAL AUTHORITY - PORT SAID SHIPYARD**  
 PORT FOAD - GAWAD HOSNY ST.  
 Port Said 42523

Has been approved in compliance with the  
 RINA "RULES FOR THE CERTIFICATION OF SERVICE SUPPLIERS"  
 for the supply of the following services to ships and other units classed by RINA:

A - Thickness measurements on ships or mobile offshore units  
 Z - Non-Destructive Testing (NDT)

Date of the audit: 19 Jun 2023  
 Issued by: ALEXANDRIA  
 on: 23 Feb 2023

This Certificate is valid from the date of the audit until  
 17 Jun 2025

This certificate consists of two pages and attachments.

*[Signature]*  
 Study EL MATHLOUT  
 RINA Services S.p.A.

**RINA**

This certificate consists of 2 pages.



Should you require any further information or assistance,  
please do not hesitate to reach out to us.

### Port Said Shipyard

-  (066) 3400339
-  (066) 3442036
-  (066) 3400324
-  (064) 3392825
-  [commercial.pss@suezcanal.gov.eg](mailto:commercial.pss@suezcanal.gov.eg)
-  P.O. Box 42524, Port Said, Egypt

